

How to Use Help Guide



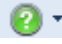
The **How to Use Help Guide** is also available within the Simergy Help CHM file that is available within Simergy , and is located in the Introduction chapter.

Table of Contents

How To Use Simergy Help..... 3
 Simergy Help Tabs..... 4
Short Video Tutorial Series 8
 Simergy - High Level..... 8
 Simergy Help 8
 How Simergy Imports and Creates Geometry 8
 Simergy HVAC Systems 9
 Simergy Results 9
 Simergy Libraries and Templates..... 9
Index..... 10

How To Use Simergy Help

There are a number of sources for Simergy Help in addition to the Compiled HTML file (CHM) that can be accessed by selecting Simergy Help from the drop down list next to the question mark within the green circle icon in the upper right hand corner of the interface.



figure 1 - Simergy Help icon

Tip: You are typically only 1 to 2 clicks away from the topic you want to find. By using the [contents](#), [index](#) and [search](#) tabs you can easily get to every topic within Simergy Help.

When you first select Simergy Help you will see a CHM pop-up dialog similar to the one shown in figure 2. A default topic will be displayed. The intent of the CHM format is to allow you to access Simergy Help while you are working within Simergy, so that you can have both files open at the same time.

Note: In future versions of Simergy there will be 'contextual help' incorporated, so that when you are working in a part of the Simergy interface and you have a question about a property or category, you will be able to right click and access that topic within Simergy Help directly.

Breadcrumbs

The Breadcrumbs in the upper right tells you where you are within the structure of the Simergy Help. If you were to select on the contents tab you would see that there is an "Introduction" folder, and then if you selected on that you would see the "10 Things" topic. The Breadcrumbs are hyperlinks that allow you to jump out to related levels of the Simergy Help.

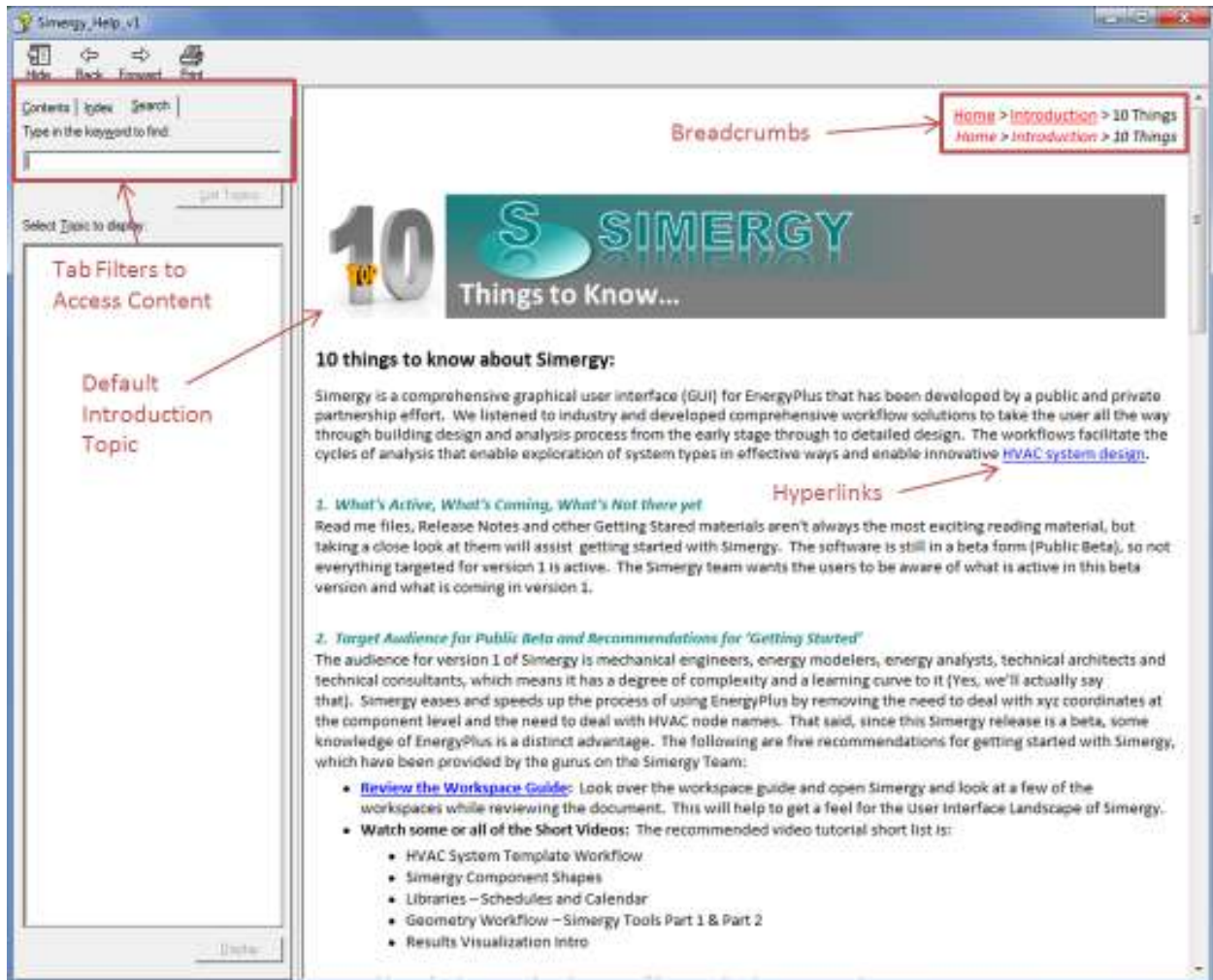


Figure 2 - Simergy Help Default Screen

Hyperlinks

Within Simergy Help there are a number of types of Hyperlinks:

- Other topics within Simergy Help -
- To pop-up dialog boxes that provide more detail
- Image Map hyperlinks to other topics
- Image Map hyperlinks to pop-up dialogs
- Links to the EnergyPlus Input Output Reference, which is embedded within Simergy Help

Simergy Help Tabs

Contents

When you select the Contents tab a set of chapters will be displayed as shown in the image on the left in Figure 3. As you start to select on different chapters the tree will expand to display the topics, sub-chapters and sub-chapter topics (image on the right of Figure 3). Selecting on any topic on the tree will display that topic in the viewing field on the right.

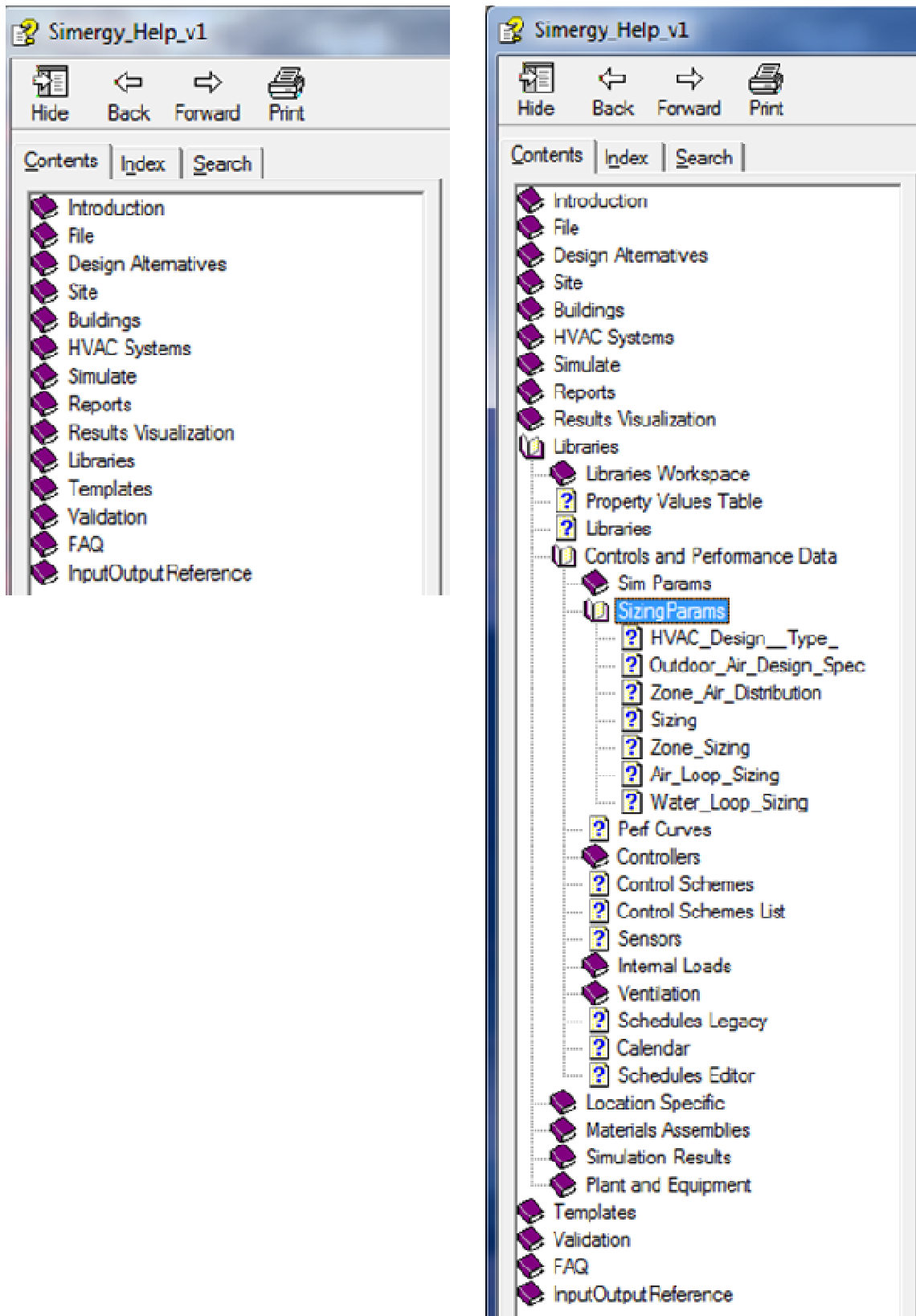


Figure 3 - Different views of the Simergy Help Content Tree

The structure of Simergy Help Chapters mimics the set-up of the interface. When you open Simergy you will see 10 main selections on the top row of the ribbon. Those 10 items starting with File and going to Templates are displayed in order, so that you have easy and intuitive access to explanations of different features within those areas.

Index

Selecting the index tab exposes the extensive index that has been set up, which provides the ability to access topics within Simergy Help, which includes the EnergyPlus Input Output Reference Guide. If you select on an index word or phrase in the list and a topic is automatically displayed on the right, then it means that there is only one topic associated with it. However if you select BEM (Building Energy Models) you will see a pop-up dialog appear with a number of topics listed. Then you can select the desired topic from the list, select Display and then it will be in the viewing area.

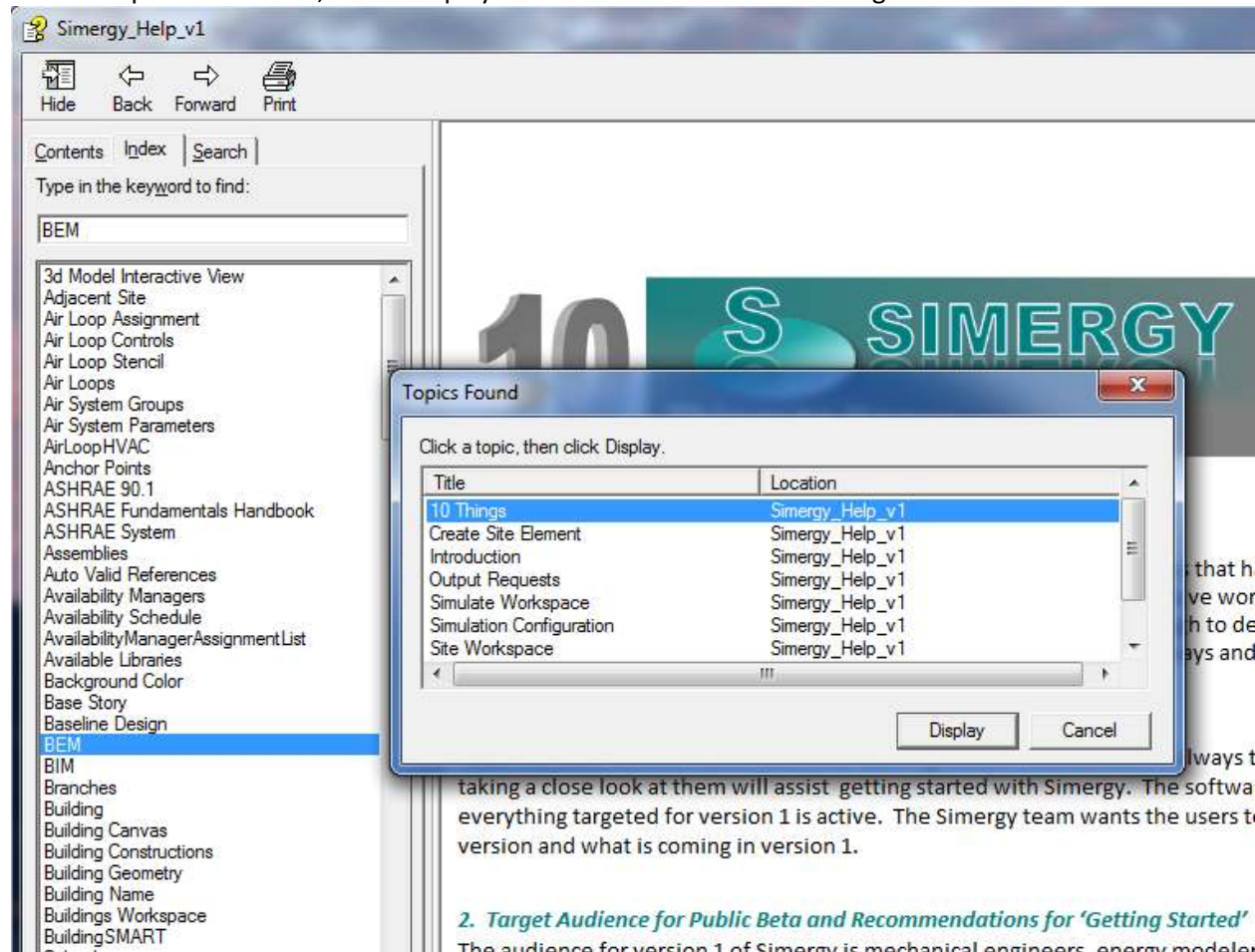


Figure 4 - Simergy Help Index Tab

Another feature is using the text you enter in the keyword field as a way to get closer to the topic you are looking for. Once you start typing in the keyword field the search has begun. If you enter "ca" the portion of the index list displayed shows the index entries with "ca" at the very top. This makes it easy to navigate the list and significantly reduces the amount of scrolling. This same approach is also included in other parts of the interface within Simergy, such as in Results Visualization.

Search

By typing "BEM" in the keyword text field and hitting enter or selecting List Topics the topics that include BEM are displayed and can easily be selected and viewed (Figure 5). This provides another way to get at topics if they do not easily present themselves in the content and index tabs. For a majority of users, the Search tab will be the first stop when looking for topics.

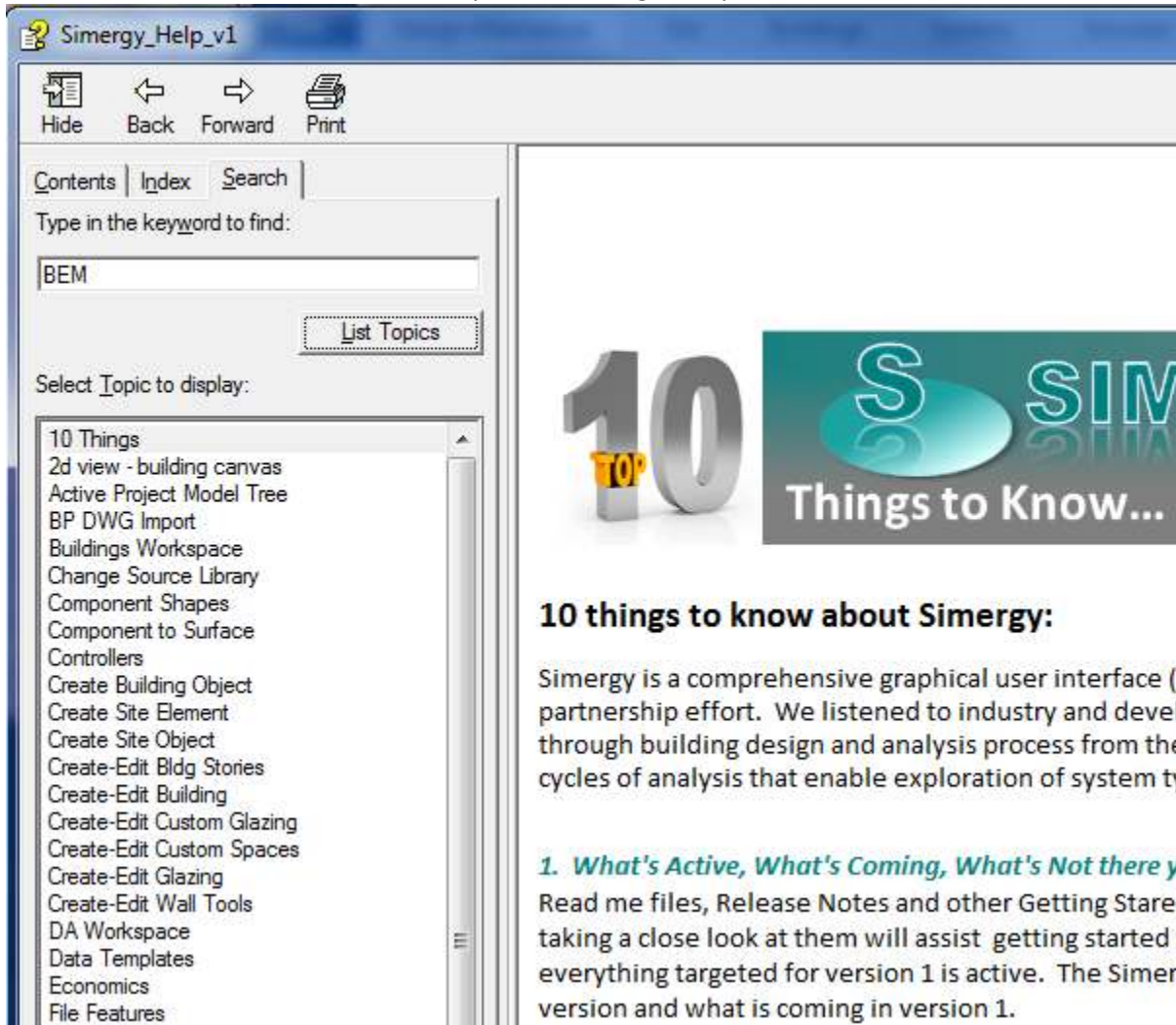


Figure 5 - Search Tab displaying the example of conducting a search on "BEM" and the resulting topics displayed.

Short Video Tutorial Series



A starter set of short video tutorials are currently available to provide some insight into the "breadth and depth" of Simergy. Each video ranges from (2) to (13) minutes in length and targets different components of Simergy. The intent is that the videos provide a step by step video example of the tasks and workflows for different features and allows you to try the features first hand. You can pause and try, attempt to do in parallel or recreate after watching. The video tutorials are part of a growing series of short videos that will continue to expose best practices and workflow explanations for Simergy. The current video tutorials are:

Simergy - High Level

Chunking Method = Simergy 3s

As with any tool or topic that is powerful and complex, it is important to "Chunk" what you take on and what you try to remember, so that the content is broken down in effective "chunks". This allows there to be more triggers that can assist learning, retaining and recalling more things. *[Duration = 6 min]*

Simergy Help

Simergy Help Tour

How to access and leverage the Simergy Help content available. *[Duration =2 min]*

Using the Simergy Guides

Guides on specific topics, such as Workspaces, Natural Ventilation, Daylighting and Results are available to provide you a more focused look and explanation of those capabilities, and to assist you getting up and running with Simergy more effectively. *[Duration =3 min]*

ASHRAE Baseline System 7 Help Tour

If you are curious to explore the setup and configuration of a simulation ready file in Simergy, you can do so by opening the ASHRAE System 7 compiled html file. *[Duration =3 min]*

How Simergy Imports and Creates Geometry

IFC Model Import

Demonstrates the Industry Foundation Class Import Workflow from import to thermal zone designation to HVAC system layout. *[Duration = 12:52]*

Geometry Creation

Part 1: Walks through how to create the site context using free form and typical shapes. Also introduces the project component tree. *[Duration = 6:57]*

Geometry Creation

Part 2: Shows how to create the BEM geometry using standard shapes and free form in combination, and introduces some of the ways the building envelope can be changed. *[Duration = 9:25]*

Simergy HVAC Systems

HVAC System Component Shapes

A light hearted look at the component shapes and the important role they play in the HVAC diagramming approach within Simergy. *[Duration = 8:16]*

Creating and Assigning a Zone HVAC Group Template

The process involved to assign a custom Zone HVAC Group to your project. *[Duration = 2 min]*

Creating an Air Loop

The process involved in creating the supply side, the demand side, and the controls for an Air Loop for a project. *[Duration = 3 min]*

Creating a Water Loop

The process involved in creating the supply side, the demand side, and the controls for multiple water loops for a project. *[Duration = 4 min]*

Creating A Model Using HVAC System Templates

Covers how to quickly create a model and prepare it for simulation using the HVAC system templates that are included in Simergy. *[Duration = 11:28]*

Simergy Results

Setting up Simulation Configurations

A short video demonstrating how Simulation Configurations can be set up and edited from the same workspace, as well as where to go in Simergy Help to find out more information about setting up Output Requests (Libraries) and Output Request Sets (Templates) *[Duration = 3:25]*

Reports

A quick video on some of the key features of the Reports Workspace, and how it is the first stop to assess if the simulation ran successfully and what things would benefit further investigation using Results Visualization. *[Duration = 3:25]*

Results Visualization

Introduces the key features of the Results Visualization workspace showing how to set up multiple chart and table views enabling detailed investigation and comparisons. *[Duration =11:13]*

Results Visualization - Multiple Results Sets and Results Screens

Shows how to manage multiple results sets and introduces result screen templates and result screens *[Duration =12:01]*

Simergy Libraries and Templates

Adding a Source Library

A source Library is at the top of the Data Chain in Simergy. It is the database that contains library entries for the different libraries categories and templates, and the short video shows how you can add one to your Simergy project. *[Duration = 3 min]*

Creating Schedules

Walks through a project scenario for a school developing schedule profiles, a special days calendar and learn how to associate both with different schedule types. *[Duration = 8:31]*

Building a Zone HVAC Group

You'll see how to set up a new Zone HVAC Group Template that we'll save to the Source Library, so that you can use it on any energy models that you build in Simergy. *[Duration = 5 min]*

Index

A

ASHRAE System.....7

B

BEM.....7

BIM.....7

Building Geometry7

C

Calendar7

 Creating.....7

Chunking11

Component Shapes.....7

D

Design Alternatives7

G

Geometry7

H

HVAC7

HVAC Systems7, 11

I

IFC7

Imported Plans.....7

L

Libraries.....7

Loop Level Controls.....7

M

Materials/Glazing Layers.....11

Metering7

O

Output Request Set.....7

Output Variables11

P

Properties7

R

Rate Structures7

Results.....1

Results Guides7

Results Sets.....7

Results Visualization1, 7

S

Schedules.....7

Sensors.....7

Simergy 3s.....7

Simulation.....11

Simulation Configuration.....7

Site7

Site Objects.....7

Special Days Calendars7

Supply Side.....7

System Templates.....7

Systems.....7

T

Templates1, 7

W

Water Loops.....7, 11

Workflows.....7

Workspaces7

Z

Zone HVAC Group.....7