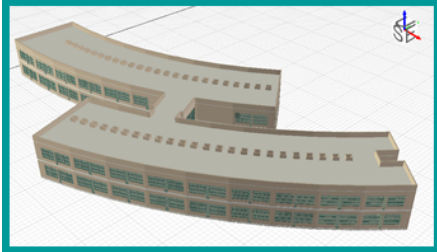
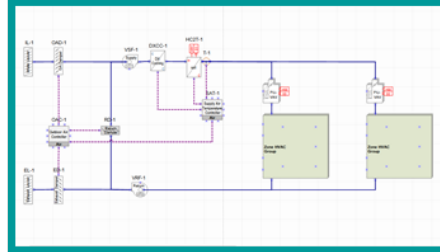


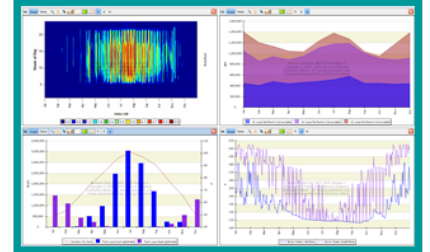
Simergy



model



design

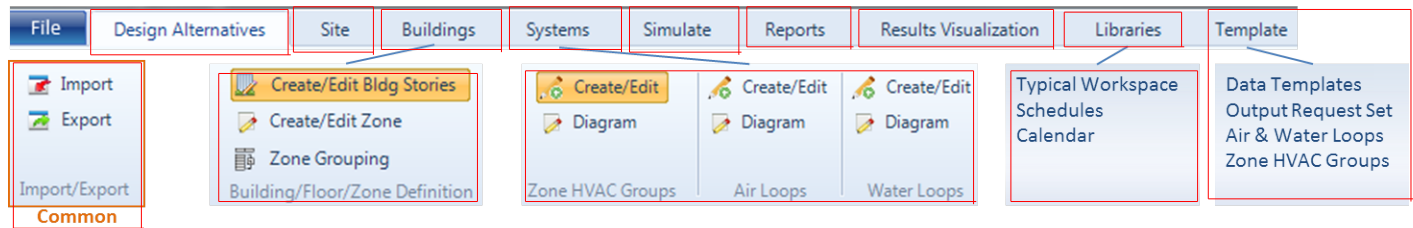


analyze

Workspace Guide

Simergy Workspace Guide

Workspace Tour - click here to access a pop-up window that runs through each of the workspaces or click on the individual links below to be taken to that area of the Simergy Help.



Workspace Tour – Interactive Roadmap

Note: Image above is an interactive portal to the different Simergy workspaces. At the end of each section is a 'workspace guide' link that will return to this page.

A portal to viewing and learning more about the different workspaces in Simergy. It is a good idea to gain a strong understanding of the different workspace types and their capabilities, so that you can maneuver around Simergy effectively.

Workspace - The user interface presented to the user when they select on a tab, which is comprised of different areas containing different drawing, selection, input/edit and/or accessing other capabilities.

The top level of the Ribbon for Simergy contains a number of tabs, and within each of those tabs the ribbon can have single or multiple sections. Each tab may have a common workspace type or may contain a number of different workspace types. Some workspace format are consistent across different tabs, such as Import and Export, while others may vary. Each chapter in Simergy Help that corresponds to a tab in the Simergy Interface will have a "Workspace Guide" topic that introduces the different workspaces associated with that tab of the interface. Below we've brought all of the Workspace Guide links together in one location and we've included notes that can assist gaining an understanding of the Simergy Interface without going through each screen.

- **File** - no workspace associated with this tab, but from the drop down menu the user has all the basic commands available and can access the "Options" (EnergyPlus Project Options) dialog box where key parameters can be accessed:
 - Model Measure Units
 - User Interface Measure Units
 - Library/Template Preferences
 - Naming Patterns fro Auto-Generated Objects
 - User Interface Language
- **Design Alternatives** - the "starting point" workspace where design alternatives (variations of the baseline model) can be set up, and the validation dashboard reviewed for each.
- **Site** - The workspace where the geometry of the site and environs can be created, reviewed and edited.
- **Buildings** - In addition to the import and export workspaces there are three main workspaces:
 - **Create/Edit Bldg Stories** - enables the creation, refinement and customization of the BEM geometry that has been defined in Simergy through one of the three main workflows (import

IFC model, import dwg and draw, draw)

- Create/Edit Zone - used to create the thermal zones within the BEM, either by assigning IFC spaces or spaces that have been created within a model.
- Zone Grouping - allows the user to set up zone groups and assignment three sets of templates (Zone Loads and Daylighting, Zone Conditions and Zone Construction) to the zone group, which can reduce the inputs required to get a simulation running significantly.
- **Systems** (HVAC Systems) - has four main workspace areas, which includes the common import and export workspace. The other three are the ones that the user will typically engage. Each has a create/edit workspace where the user sets up the different Zone HVAC and loop types required for the system design, assigns templates, assigns properties, and reviews the template diagrams that are being associated into the model. A key thing to note is that the user can not edit the diagrams displayed within the HVAC diagramming canvas.

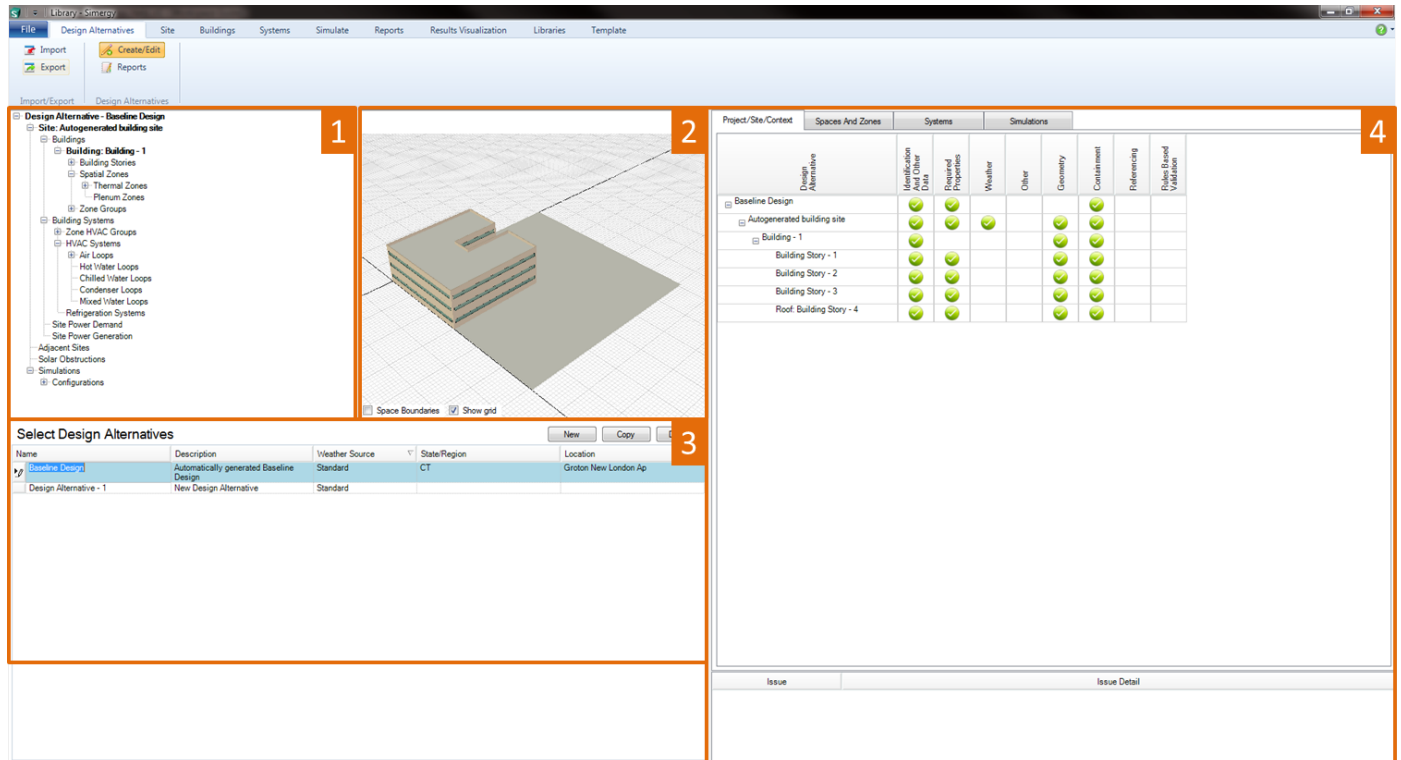
The second workspace for three main areas is "Diagram". This is the workspace where the user can build, add to, refine, change the component properties, define the System Level Controls and do a validation on the loop design to assess if further adjustments are needed.

- **Simulate** - Provides the workspace where the user cannot only set up different configuration and associate them with templates (simulation parameters, request set, output format set), but they can review the status of the validation framework checks.
- **Reports** - the 1st stop for users after the simulation has been completed. The workspace provides the ability to open individual and/or multiple predefined reports on different topics that are a combination of graphic and tabular results. The intent is that the user can come here first to assess how the model is performing, and based on what is discovered here informs how the second part of the Results, the Results Visualization is utilized.
- **Results Visualization** - is where the user can bring out their Sherlock Holmes magnifying glass and start investigating any of the output variables/meters, sets of output variables/sets of meters that EnergyPlus has to offer in different chart forms or tables. However, before selecting the thousands of output variables to associate with your model, you need to realize the implications of selecting a large set of output variables are simulation time and results database size. The workspace allows the user to set up multiple views and save them as a guide or template which can be used across multiple projects. It is a results customization playground.
- **Libraries** - **Libraries populate templates. Templates can be used in a number of ways within Simergy models to reduce the amount of inputs required, also reducing the potential for user error.** Libraries are a powerful core component of Simergy and it is worth not only becoming familiar with their structure and relationship to templates, but to take a look at what libraries are included in the current version. If the user were to click on every option listed on the ribbon across the six different ribbon sections (it is about 36 options total), they would discover that there are only four (4) workspaces that are not set up in a similar format (Import, export, schedules, calendar). So rather than spending time looking at each workspace, better time spent is getting familiar with how to use the Libraries structure.
- **Templates** - It's worth mentioning again - **Libraries populate templates. Templates can be used in a number of ways within Simergy models to reduce the amount of inputs required, also reducing the**

potential for user error. The three sections of the ribbon (import/export, data templates and system templates) all have different workspaces associated with them. The options within Data Templates is somewhat similar to the main libraries workspace with the exception being the Output Request Set workspace. The system template options are basically the same Zone HVAC Group and Loop Type options that are within the Systems tab. The user can build and refine the system templates that are available for selection within each of the Zone HVAC group and loop options. In addition, the user can validate the templates created/edited as well, rather than having to wait for it to be incorporated into the BEM before being able to assess the validation.

Design Alternatives Workspace

Simergy enables users to evaluate complex 'what if scenarios' earlier and often for new and retrofit projects using design alternatives. Numerous Design Alternatives can be included within the same file, so that the user can do comparative analysis from early stages through to detailed design and into operations.



Main workspace areas:

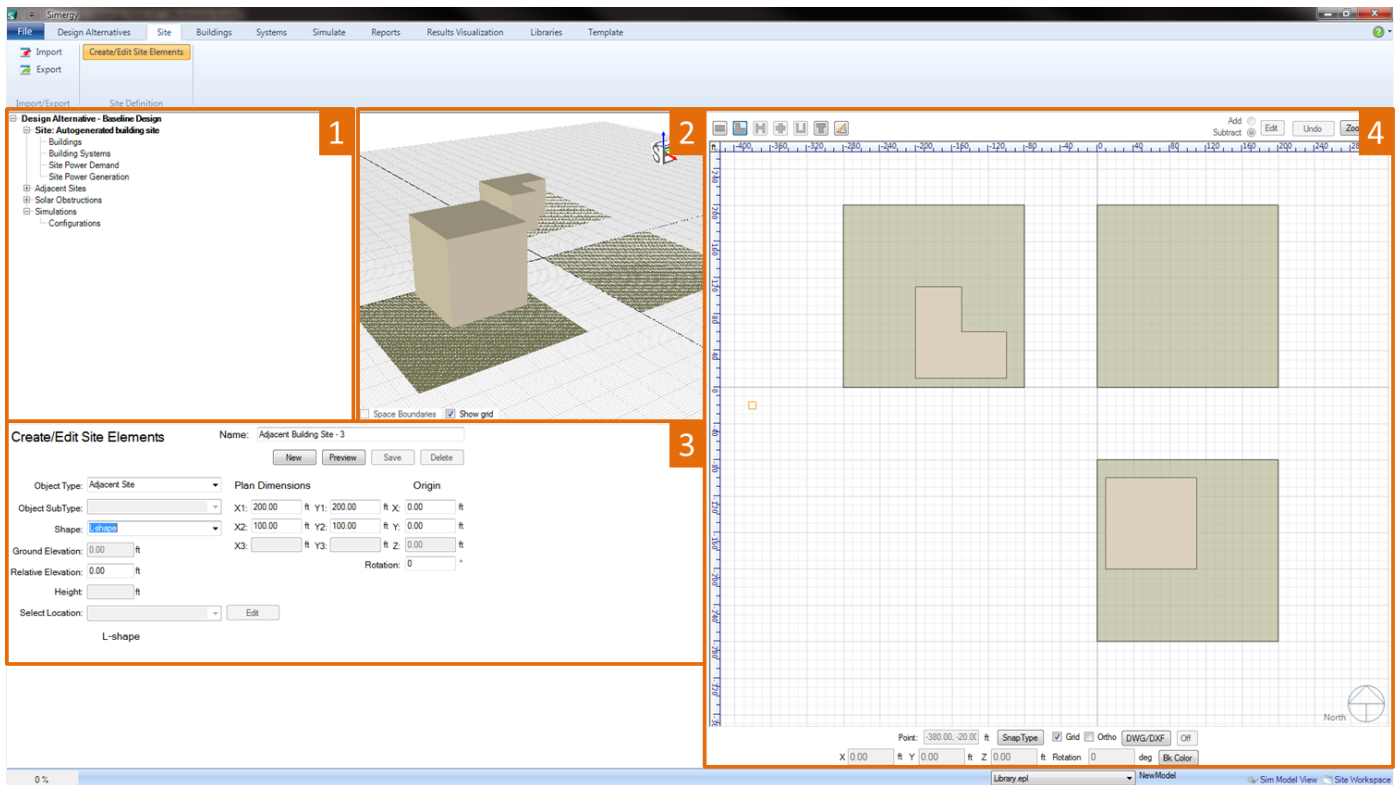
- Project/Component Tree** (top left) - allows the user to see the connections of different components for the project. Serves more as a tool to review connections versus a tool that enables the simulation workspace
- Interactive 3D Model View** (middle top) - provides the user a 3d interactive view of the current model to preview site objects that are being and/or have been created.
- Design Alternatives Creation and Selection** (bottom left) - the user can create *new* design alternatives or *copy* existing design alternatives to create new design alternatives, which carries the geometry, HVAC system set up and basically the complete BEM to the new Design Alternative. Needless to say, this can be a very powerful tool. The main user interaction with the table is to move between different Design Alternatives to review their Validation Dashboards or to make that Design Alternative the current selection and then go to other Simergy tabs to investigate and/or review detailed information about that design alternative. For new Design Alternatives a weather source needs to be determined. By default "Standard" will appear in the Weather Source column, but the user can also select "Custom", which indicates that the user will be uploading a custom weather file (.epw format). Otherwise the user can select a State from the State/Region drop down list and a City from the Location drop down list to associate a weather file with the Design Alternative.
- Validation Dashboard** (right) - enables the user to quickly review if there are any problem areas within the BEM by visually checking the four tabs (Project/Site/Context, Spaces and Zones, Systems and

Simulations) to see if there are any warnings (orange circle with exclamation point) or errors (red circle with "X") that need to be addressed for any of the Design Alternatives. Each Design Alternative has its own Validation Dashboard. More information can be obtained about the warning or error by selecting on the icon directly. An explanation of the issue and issue detail will appear in the table below.

[Workspace Guide](#)

Site Workspace

The Site workspace allows the user to develop the neighboring environs (adjacent sites, solar obstructions, etc.) for the BEM, which will shape and influence the results for the building.



The Site Workspace is comprised of four fields:

1. **Project/Component Tree** (top left) - allows the user to see the connections of different components for the project. Serves more as a tool to review connections versus a tool that enables the simulation workspace
2. **Interactive 3d Model View** (middle top) - provides the user a 3d interactive view of the current model to preview site objects that are being and/or have been created.
3. **Create Site Objects** (bottom left) - the main control panel for adding site objects to the BEM. The first step is to select "NEW" to initiate the process. Next the user will select the desired *object type* (Adjacent Site, Solar Obstruction, Power Demand, Power Generation), which influences what capabilities are exposed in this field. For Adjacent Sites and Solar Obstructions the results of the *object sub type* and *shape* selections will start to appear in the 3d view and 2d view once they are selected. The location can be adjusted by entering X and Y values in the Origin column on the right side of the field. Other input selections are available, but once they are too the user's liking they can select *Preview* to visualize the full picture of the input selections. The object is not a part of the BEM until *Save* is selected.
4. **Overall 2d View** (right) - displays the 2d view of the base floor plan or any of the available floor plans selected from the project component tree or the interactive 3d view. If spaces have been defined in the model they will be displayed (core and perimeter spaces differ in color). The 2d view is active

when the user is creating site elements to either visually preview the object that is being created or if freeform has been selected it is the canvas on which the user draws the custom form. The user has a number of other controls such as direct entry and reporting of X, Y and Z values, the ability to change the orientation, snap, grid and background color controls, as well as the ability import and manipulate the visible layers for a DWG/DXF file.

The Ribbon includes two sections:

- **[Import/Export](#)** - takes the user to the common import and export workspaces that allow drawings or IFC models to be imported or the BEM to be exported
- **Site Definition** - the default Site Workspace. It can be selected from the ribbon after work has been done in either the import or export workspace

[Workspace Guide](#)

Buildings Workspace

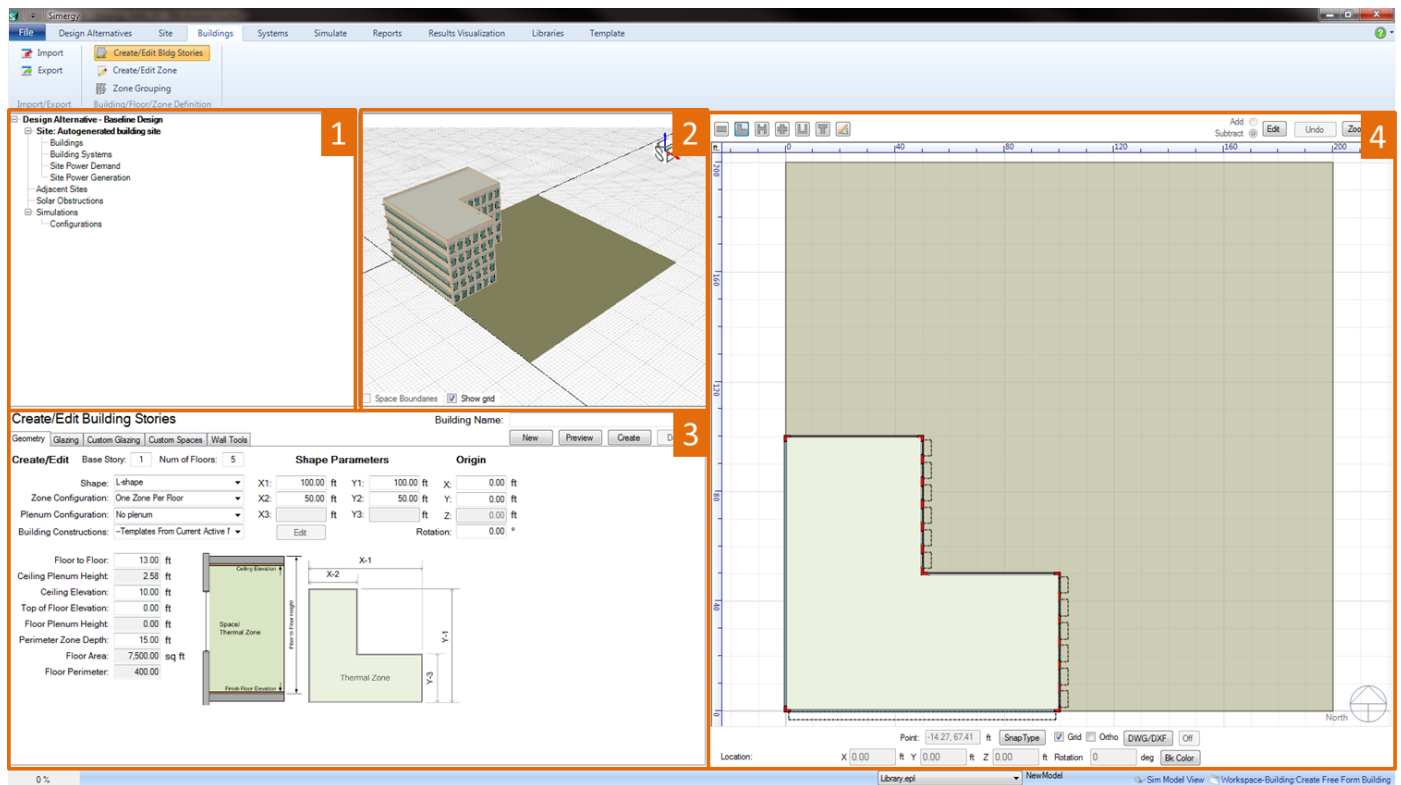
The Building workspace enables the user to create/refine geometry, create zones, and establish zone grouping related to all three of the main geometry workflows, which include 1) Defining Building Geometry within Simergy; 2) Defining Building Geometry in Simergy by tracing over 2d plans; 3) Importing an IFC Concept Design BIM Model View Definition model.

The Ribbon includes two sections:

- **Import/Export** - takes the user to the common import and export workspaces that allow drawings or IFC models to be imported or the BEM to be exported
- **Building/Floor/Zone Definition** - the portion of the ribbon that controls access to the three main workspaces - *Create/Edit Bldg Stories*, *Create/Edit Zone* and *Zone Grouping*

Create/Edit Building Stories

The workspace where users can create and edit BEM geometry at the overall building form level down to the individual window.



The Workspace is comprised of four fields:

1. **Project/Component Tree** (top left) - allows the user to see the connections of different components for the project. Serves more as a tool to review connections versus a tool that enables the simulation workspace
2. **Interactive 3d Model View** (middle top) - provides the user a 3d interactive view of the current model to preview site objects that are being and/or have been created.

3. **Create/Edit Building Stories** - the main control center for developing, managing and editing geometry for the BEM. Similar to the [Site Workspace](#) the process of geometry creation starts when the user selects "**New**". The next important step is choosing the **Shape**. If one of the standard shapes is selected then the user continues completing the inputs in this field, however if **Free Form** is selected from the drop down list then the user will be drawing the custom geometry within the 2d view, either on a blank canvas or tracing over a 2d DWG/DXF drawing. Numerous other inputs are available related to positioning the building form, establishing the overall height and floor by floor heights and components, zone and plenum configurations and building constructions. And that is just for this tab. The following provide additional detail on the different tabs available. Once the user has set the desired inputs (or even if they just want to get a visual of where they are at) they can select **preview**, which will show the result in the 3d and 2d views. Again it is important to note that the building object is not part of the BEM until **Save** is selected.

- [Geometry](#)
- [Glazing](#)
- [Custom Glazing](#)
- [Custom Spaces](#)
- [Wall Tools](#)

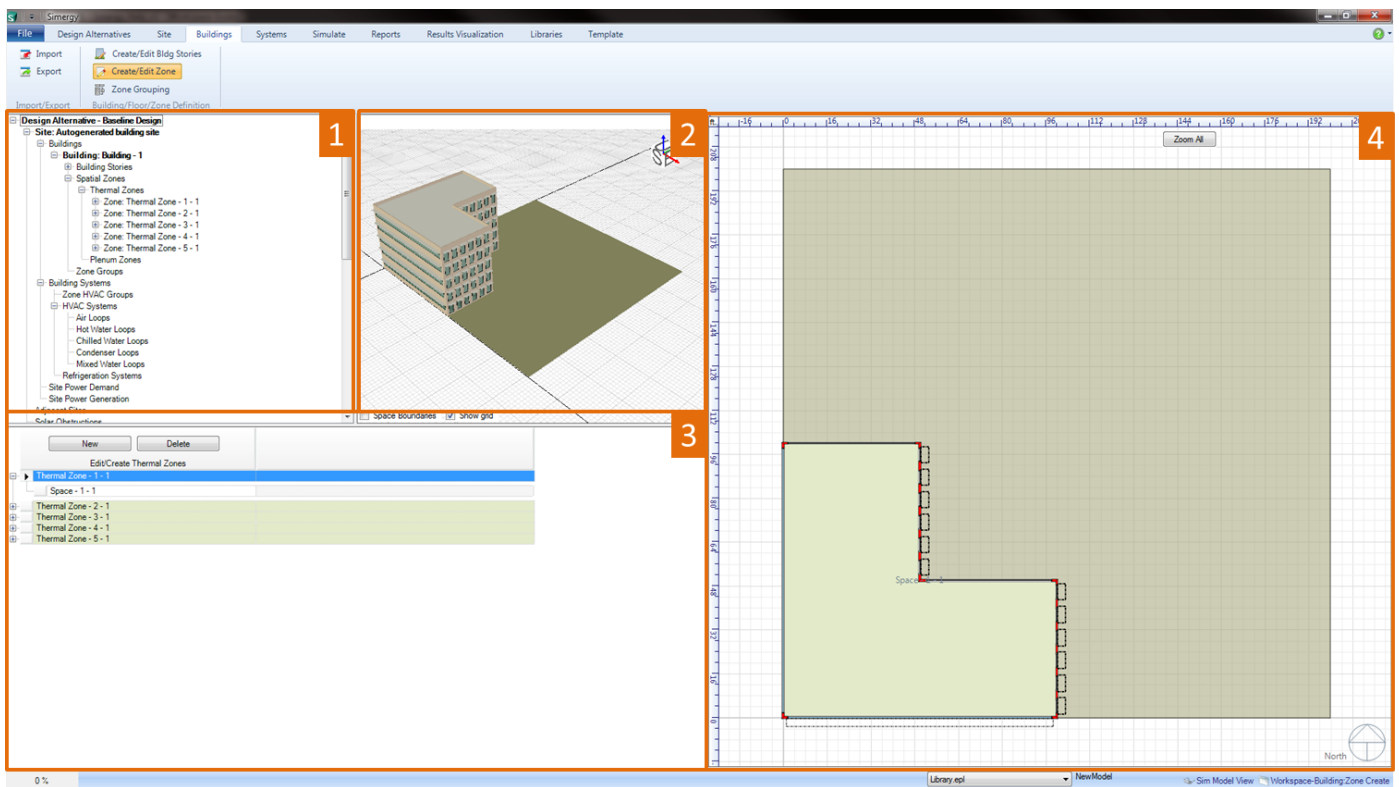
Tip: It is worth spending some time reviewing and trying out different capabilities on the different tabs, because it will enhance the user's ability to work with BEMs, particularly related to the custom glazing and custom spaces capabilities.

4. **Overall 2d View** (right) - displays the 2d view of the base floor plan or any of the available floor plans selected from the project component tree or the interactive 3d view. If spaces have been defined in the model they will be displayed (core and perimeter spaces differ in color). The 2d view is active when the user is creating site elements to either visually preview the object that is being created or if freeform has been selected it is the canvas on which the user draws the custom form. The user has a number of other controls such as direct entry and reporting of X, Y and Z values, the ability to change the orientation, snap, grid and background color controls, as well as the ability import and manipulate the visible layers for a DWG/DXF file.

[Workspace Guide](#)

Create/Edit Zone

The workspace where users can define thermal zones for imported spaces or spaces within thermal zones defined in Simergy can be grouped in different ways.



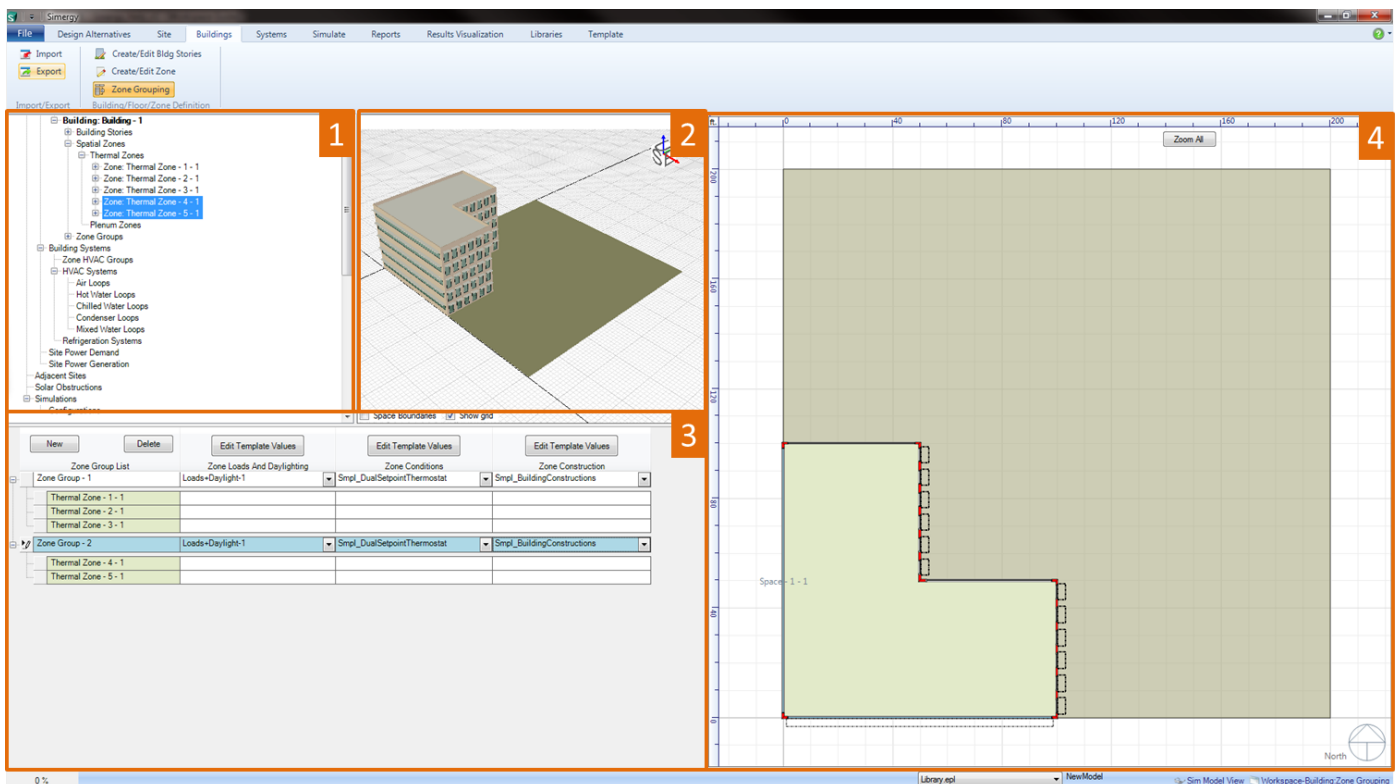
The Workspace is comprised of four fields:

1. [Project/Component Tree](#) (top left) - allows the user to see the connections of different components for the project. Serves more as a tool to review connections versus a tool that enables the simulation workspace
2. [Interactive 3d Model View](#) (middle top) - provides the user a 3d interactive view of the current model to preview site objects that are being and/or have been created.
3. Create/Edit Thermal Zones (bottom left) - allows the user to create thermal zones that include single or multiple spaces. It is part of the Simergy Hierarchy of Zone Groups and Thermal Zones, which allow the users to configure and group spaces and zones in different ways. *Tip: for IFC model imports it is important to review to see that all the BEM spaces are associated with thermal zones or they will not be part of the simulation.*
4. Overall 2d View (right) - different from the Create/Edit Building Stories workspace the drawing controls are not included in the 2d view. The main use in this workspace is to allow the users to visualize which spaces are a part of which thermal zone, as well as assessing if spaces from an imported model (such as IFC) have not been associated with a thermal zone. A space will be shown with a white background if it has not been associated with a thermal zone.

[Workspace Guide](#)

Zone Grouping

The workspace where users can define Zone Groups and associate thermal zones with them. It is also the workspace where the BEM input process can start to be streamlined by assigning zone loads and daylighting, zone conditions and zone construction templates to the Zone Groups. As users become more familiar with Simergy they will gain insight into how the input process can be streamlined.



The Workspace is comprised of four fields:

1. **Project/Component Tree** (top left) - allows the user to see the connections of different components for the project. Serves more as a tool to review connections versus a tool that enables the simulation workspace
2. **Interactive 3d Model View** (middle top) - provides the user a 3d interactive view of the current model to preview site objects that are being and/or have been created.
3. **Create/Edit Zone Groups** (bottom left) - Enables the user to create different Zone Groups, which can have Zone Loads and Daylighting, Zone Conditions and Zone Construction Templates attached. Single thermal zones or thermal zones including multiple spaces can be included in a Zone Group by highlighting the desired thermal zones in the Project Component Tree and then drag and drop them onto the Zone Group list name. In addition to selecting templates that can be quickly associated with Zone Groups, the user can also edit the templates by selecting Edit Template Values. The result is a pop-up dialog that allows the user to edit the desired template and save changes without having to go to the Templates and/or Libraries workspace to make changes. *Tip: The input process for a Simergy BEM can be established fairly quickly if the user spends a bit of time thinking about how to leverage the templates that can be applied to Zone Groups.*
4. **2d View - Building Canvas** (right) - similar to the 2d view in the Create/Edit Zone workspace the user can visualize what thermal zones are associated with different Zone Groups.

[Workspace Guide](#)

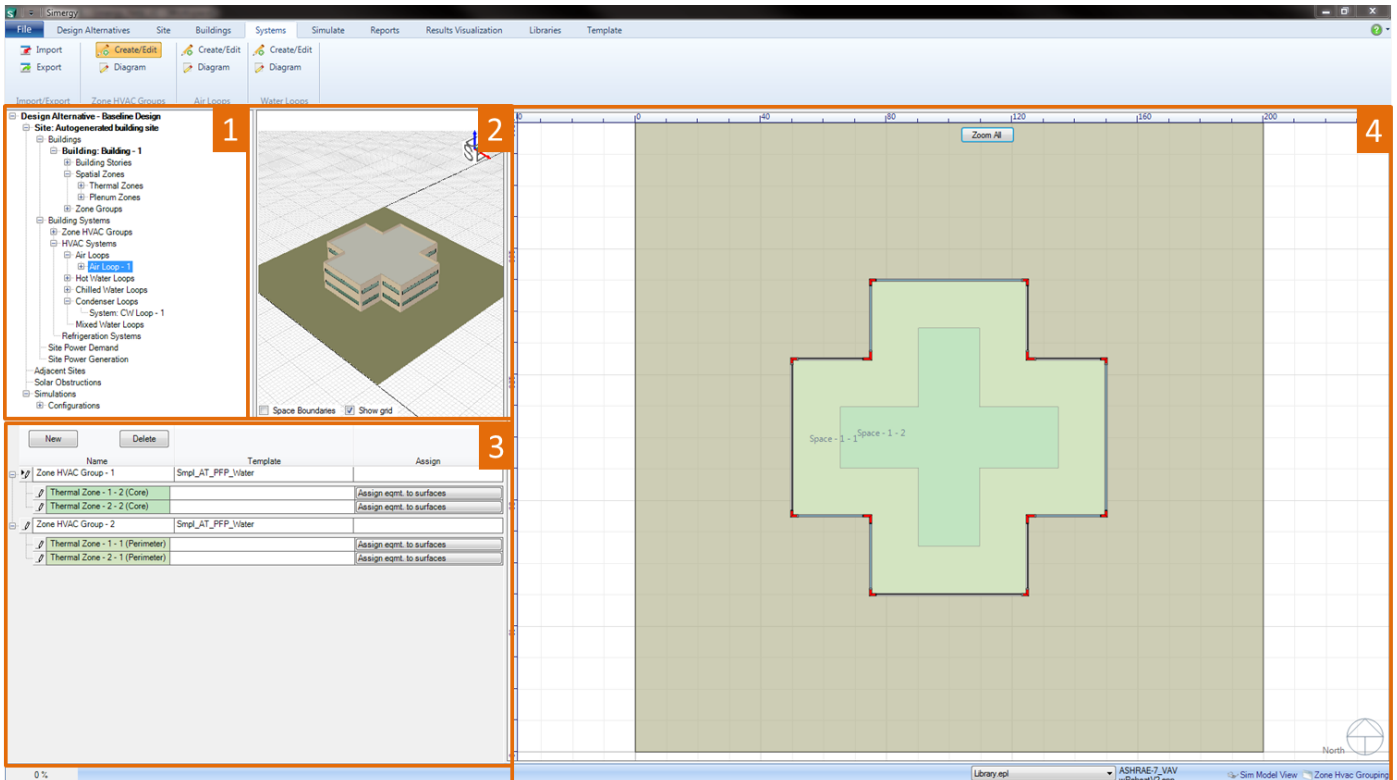
HVAC Systems Workspace

The Systems tab within Simergy contains a number of different workspace types. The sections provide a screenshot (a visual) of the workspace, which highlights the main workspace capability areas, and a portal to descriptions (the detail) of the capability sections. The workspace list is expressed as the ribbon section and then the workspace area name. In this case each listing on the ribbon presents a slightly different workspace, results in eight main workspaces on the Systems tab (including the common Import and Export workspaces)

| | | |
|---------------------------------|----------------------------|---------------------------|
| Import/Export - Import (common) | Zone HVAC Groups - Diagram | Water Loops - Create/Edit |
| Import/Export - Export (common) | Air Loops - Create/Edit | Water Loops - Diagram |
| Zone HVAC Groups - Create/Edit | Air Loops - Diagram | |

Zone HVAC Groups - Create/Edit

The workspace where users can define Zone HVAC Groups, associate thermal zones with the Zone HVAC Groups and assign Zone HVAC Equipment templates to the Zone HVAC Groups to define the demand side for the air loops.



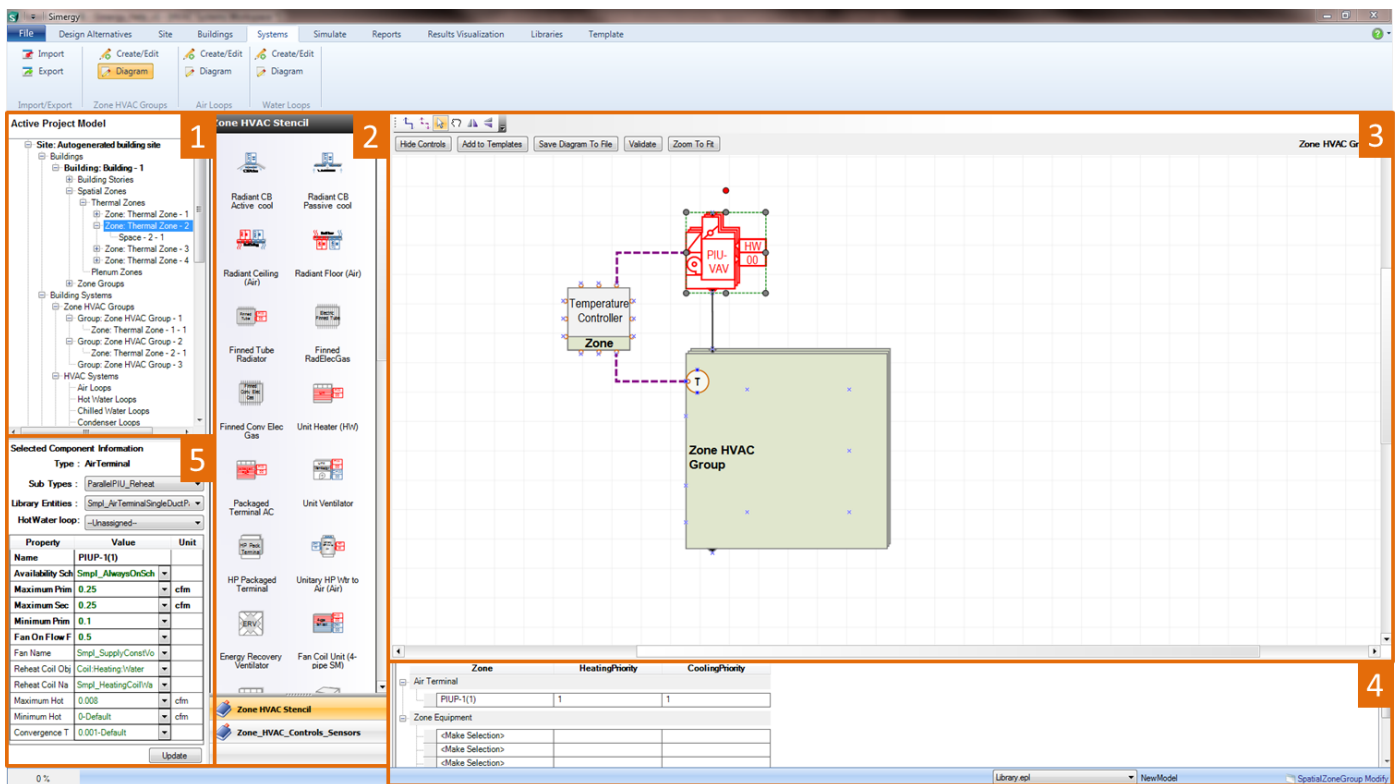
Main workspace areas:

1. [Project/Component Tree](#) (top left) - allows the user to select single or multiple thermal zones and add them to a Zone HVAC Group by dragging and dropping them on the targeted Zone HVAC Group name.
2. [Interactive 3d Model View](#) (middle top) - provides the user a 3d interactive view of the current model to preview site objects that are being and/or have been created.
3. **Zone HVAC Groups** (bottom left) - allows the user to define what every Simergy model must have, at least one Zone HVAC Group. Unlimited Zone HVAC Groups can be added to the model by selecting New. For each Zone HVAC Group the user can add single or multiple thermal zones by dragging and dropping the thermal zones from the Project/Component Tree. Once a Zone HVAC Group has one thermal zone associated with it, then the template column becomes active and the user can select from the available templates in the drop down list or they can create their own. Selecting a template establishes the demand side configuration for this Zone HVAC Group within the Air Loop. *Tip: The Zone HVAC Group that is selected will be the Zone HVAC Group template displayed in the Diagram Workspace.*
4. [Overall 2d View](#) (right) - displays the 2d view of the base floor plan or any of the available floor plans selected from the project component tree or the interactive 3d view. If spaces have been defined in the model they will be displayed (core and perimeter spaces differ in color). The 2d view is active when the user is creating site elements to either visually preview the object that is being created or if freeform has been selected it is the canvas on which the user draws the custom form. The user has a number of other controls such as direct entry and reporting of X, Y and Z values, the ability to change the orientation, snap, grid and background color controls, as well as the ability to import and manipulate the visible layers for a DWG/DXF file.

[Workspace Guide](#)

Zone HVAC Groups - Diagram

The workspace that allows the user to edit the Zone HVAC Group through either adding zone equipment from the shape component stencils, removing zone equipment or changing the values of properties included in the Zone HVAC Group Template.



Main workspace areas include:

- 1. Project/Component Tree** (top left) - to change the Zone HVAC Group Diagram that is being worked on in the Diagram workspace, the user can select the desired Zone HVAC Group from the tree, right click, and select Diagram Zone Group.
- 2. HVAC diagramming stencils** - Zone HVAC Stencil and Zone HVAC Controls & Sensors stencils are both options to the user and they are made active by just selecting on the stencil title. The Zone HVAC stencil is the default and shows icons with titles to describe the available Zone HVAC equipment that can be incorporated into the Zone HVAC Group. Shape components can be selected from the Stencil and then dragged and dropped on the HVAC diagramming canvas to be incorporated into the Zone HVAC Group. Each shape component has anchor points, which assist placing the shape components. Those anchor points will snap to the anchor points (blue x) that are located within the Zone HVAC Group shape and indicate a maximum number of shape components that can be associated with a Zone HVAC Group.
- 3. HVAC diagramming canvas** - paints the interactive picture of the components, sensors and controls associated with the Zone HVAC Group. New components can be added from the stencils within the Zone HVAC Group shape or outside of it (Air Terminal Shape variations, shared supply and/or return plenums and controllers), new connections and connectors can be added, shapes can be moved or relocated, controls can be hidden, components can be selected to display their properties on the lower left of the workspace, the Zone HVAC Group can be validated and a number of other capabilities are at the users fingertips (think tip of the iceberg). For example, if an air terminal component is selected and the user wants to change the sub type, then can select a different one in the component properties and when they select update the air terminal shape will change to the new sub type that has been selected. *Tip: Note that when a user is editing a Zone HVAC Group when they leave that workspace it is automatically saved*
- 4. System Level Controls/Validation** -This field has tabs for setting the heating/cooling priority and a second tab for displaying validation findings. The user can set the heating and cooling priority for air

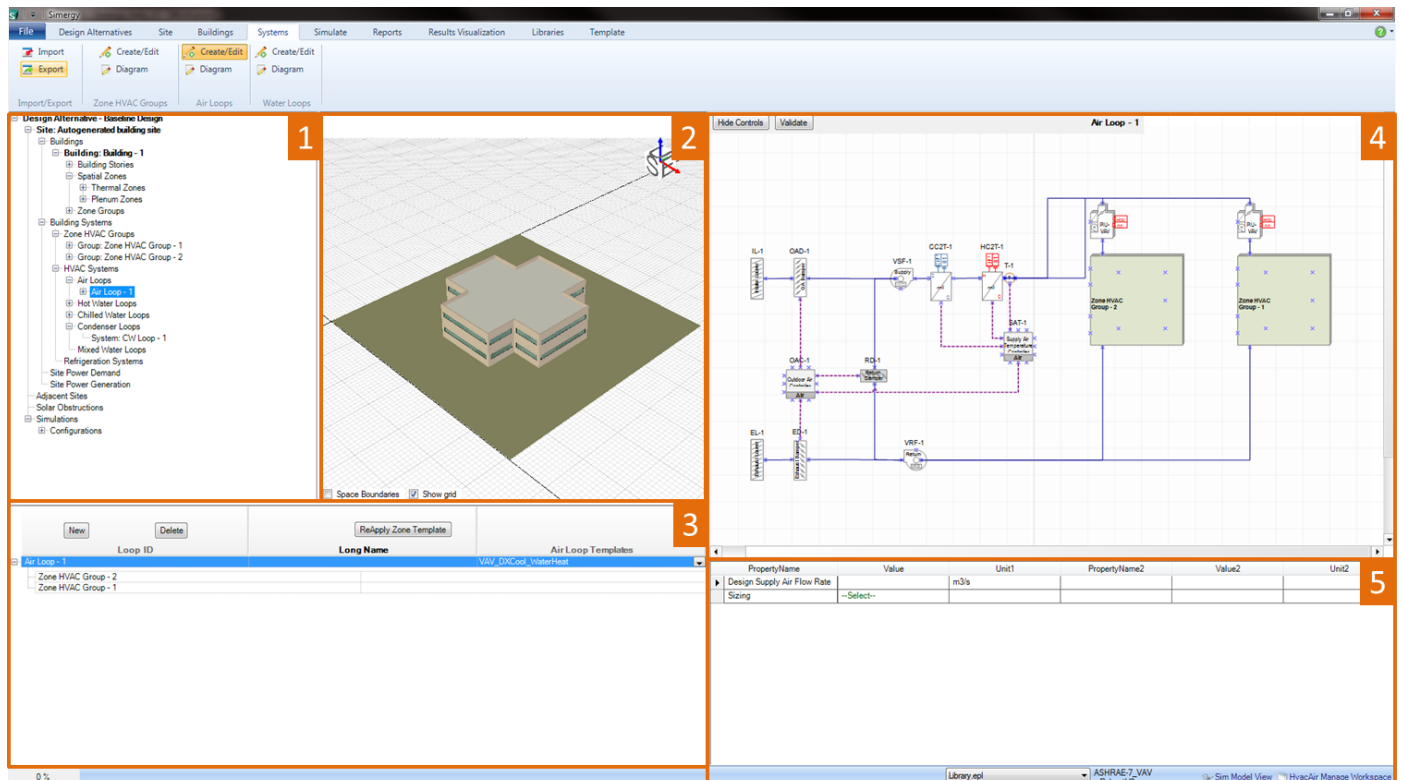
terminals and zone equipment separately. When equipment is added to the Zone HVAC Group the name of the component will automatically be added to the table. To set the priority the user must select the priority number for both heating and cooling from the drop down list. If the user selects *Validate* on the HVAC diagramming canvas the validation results (name, system issue to be fixed, and error type) will be displayed on the *Validation* tab.

5. **Selected Component Information** - when the user selects a component from the HVAC diagramming canvas property information will appear in this field. The type of properties displayed will vary significantly component to component, however the line items shown above the table are common fields. For those users that are familiar with the Input Data File (IDF) structure, the property list for each component is aligned with that list. For each component Type, Sub Types and Library Entities will be shown, while shapes that contain off-page reference tags will potentially have up to four additional line items for each of the water loop types (HW, CHW, MxW, CW). *Tip: Make sure a component has a Library Entity specified, otherwise the BEM will not simulate.*

Workspace Guide

Air Loops - Create/Edit

The workspace allows the user to set up a single or multiple air loops by selecting an Air Loop Template (defining supply side) and assigning Zone HVAC Groups (defining demand side) to them. Once these templates have been assigned then the user can visualize the Air Loop Diagram and they can assign system parameters as well.



Main workspace areas include:

1. **Project/Component Tree** (top left) - Zone HVAC Groups can be highlighted and then dragged and dropped onto the Air Loop ID name to assign those Zone HVAC Groups to the Air Loop. Once that has

been done the Zone HVAC Group diagrams will be shown on the demand side of the Air Loop.

2. **Interactive 3d Model View** (middle top) - provides the user a 3d interactive view of the current model to preview site objects that are being and/or have been created.
3. **Air System Groups** (bottom left) - allows the user to build or delete single or multiple air loops. The supply side and demand side need to be established to set up the Air Loop. The Supply side can be established by selecting an Air Loop Template from the drop down list in that column. The Air Loop Template could just serve as the starting point for the loop design that can then be edited in the Diagram workspace. The demand side is defined by applying the Zone HVAC groups to the Air Loop, which can be done by dragging and dropping them from the Project Component Tree. Once a Zone HVAC Group is applied the default Demand Side Shape is replaced with the Zone HVAC Group diagram.
4. **HVAC diagramming canvas** - paints the picture of the Air Loop Design for the supply and demand side based on the templates that have been applied. The user can view other Air Loop Designs by selecting a different Air Loop from the Air Loop Groups. In addition the user can choose to hide the controls to display a simpler loop design picture or show the controls to get the complete picture. The only thing the user can't do is select components and start editing the loop design. To do that they need to go to the Diagram Workspace. *Tip: the Zoom to Fit button can be very useful when the user is investigating different aspects of the Air Loop design.*
5. **Air System Parameters** (bottom right) - allows the user to set parameters, such as sizing criteria, at the overall Air Loop level.

Workspace Guide

Air Loops - Diagram

Allows the user to get up close and personal with the Air Loop(s) design. They can edit and adapt templates that have been applied to the Air Loop at the Zone HVAC Group and component level.

The screenshot displays the Simergy software interface for the 'Air Loop - 1' workspace. The interface is annotated with numbered callouts 1 through 5:

- 1:** Design Alternative - Baseline Design (Project Component Tree)
- 2:** Air Loop Stencil (Component palette)
- 3:** Selected Component Information (Properties panel for CoolingCoilWater)
- 4:** Air Loop - 1 (Main diagram workspace)
- 5:** Loop Level Control (Availability Manager and Demand Manager tables)

The 'Selected Component Information' panel shows the following properties for the 'CoolingCoilWater' component:

| Property | Value | Unit |
|---------------------|--------------------|------|
| Control Variable | | |
| Action | | |
| Actuator Variable | | |
| Controller Converge | deltaC | |
| Maximum Actuate | m3/s | |
| Minimum Actuated | m3/s | |
| Availability Schedu | Smpl_AlwaysOnSched | |
| Design Water Flo | 0.0011 | m3/s |
| Design Air Flow R | 1 | m3/s |

The 'Loop Level Control' panel shows the following tables:

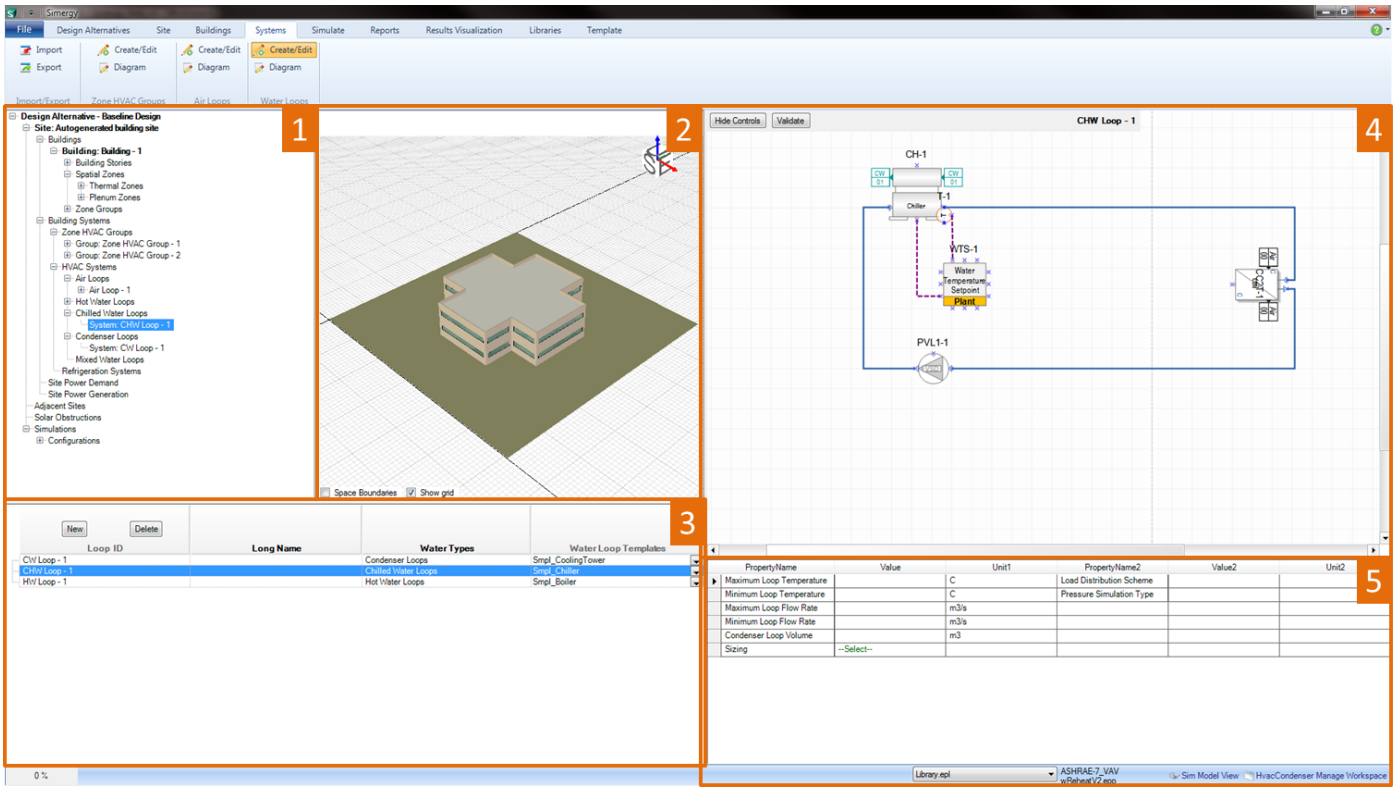
| Priority | Object Type |
|----------|-------------|
| 1 | Scheduled |
| 2 | |
| 3 | |
| 4 | |
| 5 | |
| 6 | |
| 7 | |
| 8 | |

Main workspace areas include:

1. [Project/Component Tree](#) (top left) - to change the Air Loop Diagram that is being worked on in the Diagram workspace, the user can select the desired Air Loop from the tree, right click, and select Diagram Air Loop.
2. [HVAC diagramming stencils](#) - Air Loop and Controls & Sensors stencils are both options to the user. They are made active by just selecting on the stencil title. The Air Loop stencil is the default and shows icons with titles to describe the available Air Loop shape components that can be incorporated into the Air Loop. Shape components can be selected from the Stencil and then dragged and dropped on the HVAC diagramming canvas to be incorporated into the current Air Loop. Each shape component has anchor points (blue x), which assist placing the shape components, as well as adding connections.
3. [Selected Component Information \(Properties\)](#) - when the user selects a component from the HVAC diagramming canvas property information will appear in this field. The type of properties displayed will vary significantly component to component, however the line items shown above the table are common fields. For those users that are familiar with the Input Data File (IDF) structure, the property list for each component is aligned with that list. For each component Type, Sub Types and Library Entities will be shown, while shapes that contain off-page reference tags will potentially have up to four additional line items for each of the water loop types (HW, CHW, MxW, CW). *Tip: Make sure a component has a Library Entity specified, otherwise the BEM will not simulate.*
4. [HVAC diagramming canvas](#) - paints the interactive picture of the components, sensors and controls associated with the Air Loops. New components can be added from the stencils to either the supply side or the demand side, however if the user wants to change the components within the Zone HVAC Group it is recommended that it be done in the Zone HVAC Diagram workspace. New connections and connectors can be added, shapes can be moved or relocated, controls can be hidden, components can be selected to display their properties on the lower left of the workspace, the Air Loop can be validated and a number of other capabilities are at the users fingertips (think tip of the iceberg). *Tip: if the user is making edits to an Air Loop design or building one from scratch, it is recommended to validate early and often to reduce potential issues later in the BEM development process..*
5. [System Level Controls](#) - contains a tab for loop level controls and validation results. The user can set priorities for Availability Managers and Demand Managers by selecting Properties, which displays a pop-up dialog where objects can be selected from the drop down list and then an available scheme can be selected. Once these have been defined summary information (priority and object type) will be displayed. The properties dialogs across the Availability and Demand Managers differ, so it would be useful for the user to review those capabilities. On the validation results tab, if the user selects [Validate](#) on the HVAC diagramming canvas the validation results (name, system issue to be fixed, and error type) will be displayed on this tab.

[Workspace Guide](#)

Water Loops - Create/Edit

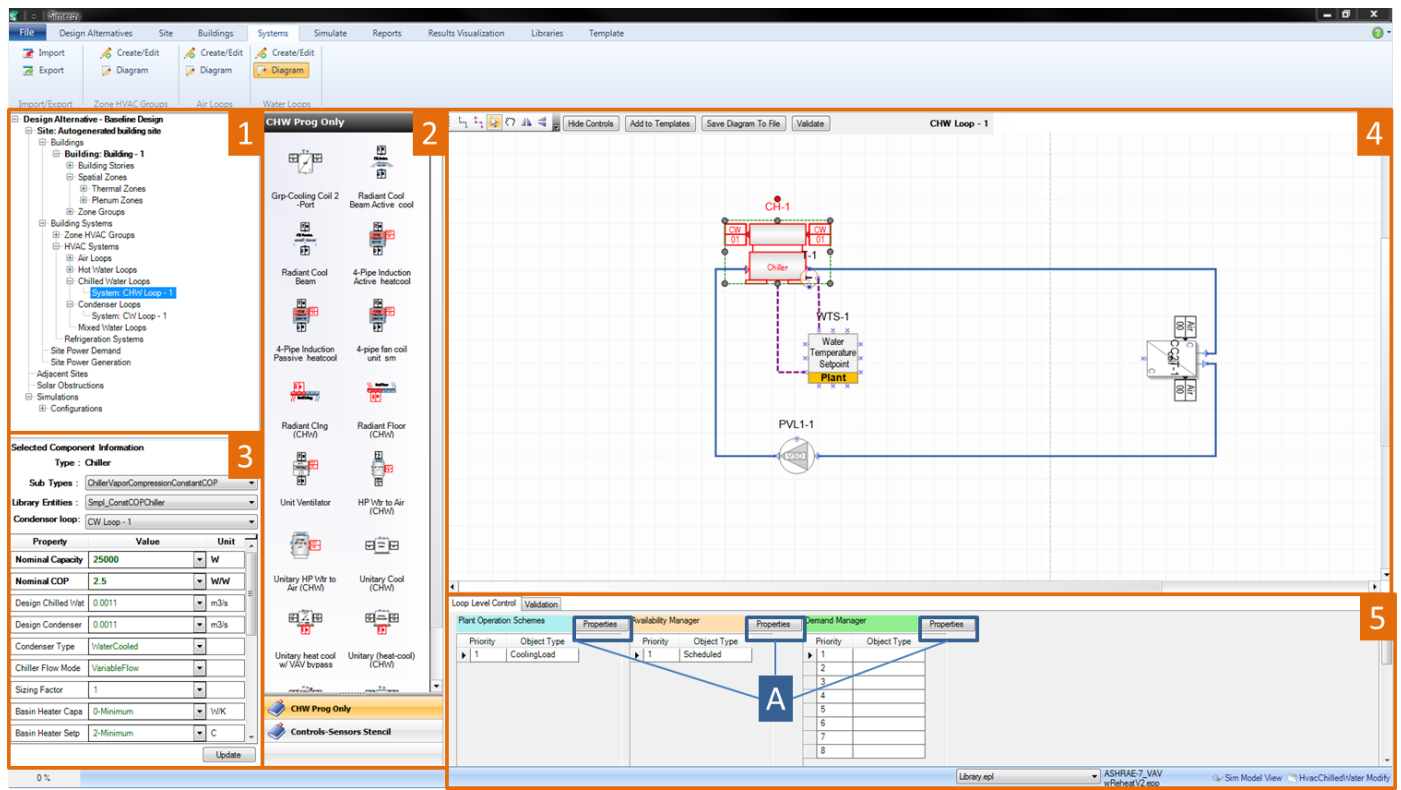


Main workspace areas include:

1. **Project/Component Tree** (top left) - Zone HVAC Groups can be highlighted and then dragged and dropped onto the Air Loop ID name to assign those Zone HVAC Groups to the Air Loop. Once that has been done the Zone HVAC Group diagrams will be shown on the demand side of the Air Loop.
2. **Interactive 3d Model View** (middle top) - provides the user a 3d interactive view of the current model to preview site objects that are being and/or have been created.
3. **Water System Loops** (bottom left) - allows the user to create or delete single or multiple water loops. The user can create Hot Water, Chilled Water, Condenser Water or Mixed Water Loops by selecting New. The user can then select a Water Loop Template from the available selections or go to the Templates tab to create their own. Once a template has been applied the supply side of the water loop will be displayed on the HVAC diagramming canvas with the demand side demand box shape placeholder. The demand side will appear once the water loops have been assigned to the components with off-page references that are included in the other loops. The user can view different water loops by selecting on the different water loops.
4. **HVAC diagramming canvas** - paints the picture of the Water Loop Design for the supply and demand side based on the templates that have been applied. The user can choose to hide the controls to display a simpler loop design picture or show the controls to get the complete picture. The only thing the user can't do is select components and start editing the loop design. To do that they need to go to the Diagram Workspace.
5. **Water System Parameters** (bottom right) - allows the user to set parameters, such as sizing criteria, at the overall Water Loop level.

[Workspace Guide](#)

Water Loops - Diagram



Main Workspace areas include:

1. **Project/Component Tree** (top left) - to change the Air Loop Diagram that is being worked on in the Diagram workspace, the user can select the desired Air Loop from the tree, right click, and select Diagram Air Loop.
2. **HVAC diagramming stencils** - Water Loop and Controls & Sensors stencils are both options to the user. The type of water loop stencil shown is dependent on what is the current loop type. Shape components can be selected from the Stencil and then dragged and dropped on the HVAC diagramming canvas to be incorporated into the current Water Loop. Each shape component has anchor points (blue x), which assist placing the shape components, as well as adding connections.
3. **Selected Component Information (Properties)** - when the user selects a component from the HVAC diagramming canvas property information will appear in this field. The type of properties displayed will vary significantly component to component, however the line items shown above the table are common fields. For those users that are familiar with the Input Data File (IDF) structure, the property list for each component is aligned with that list. For each component Type, Sub Types and Library Entities will be shown, while shapes that contain off-page reference tags will potentially have up to four additional line items for each of the water loop types (HW, CHW, MxW, CW). *Tip: Make sure a component has a Library Entity specified, otherwise the BEM will not simulate.*
4. **HVAC diagramming canvas** - paints the interactive picture of the components, sensors and controls associated with the Air Loops. New components can be added from the stencils to either the supply side or the demand side, however if the user wants to change the components within the Zone HVAC Group it is recommended that it be done in the Zone HVAC Diagram workspace. New connections and

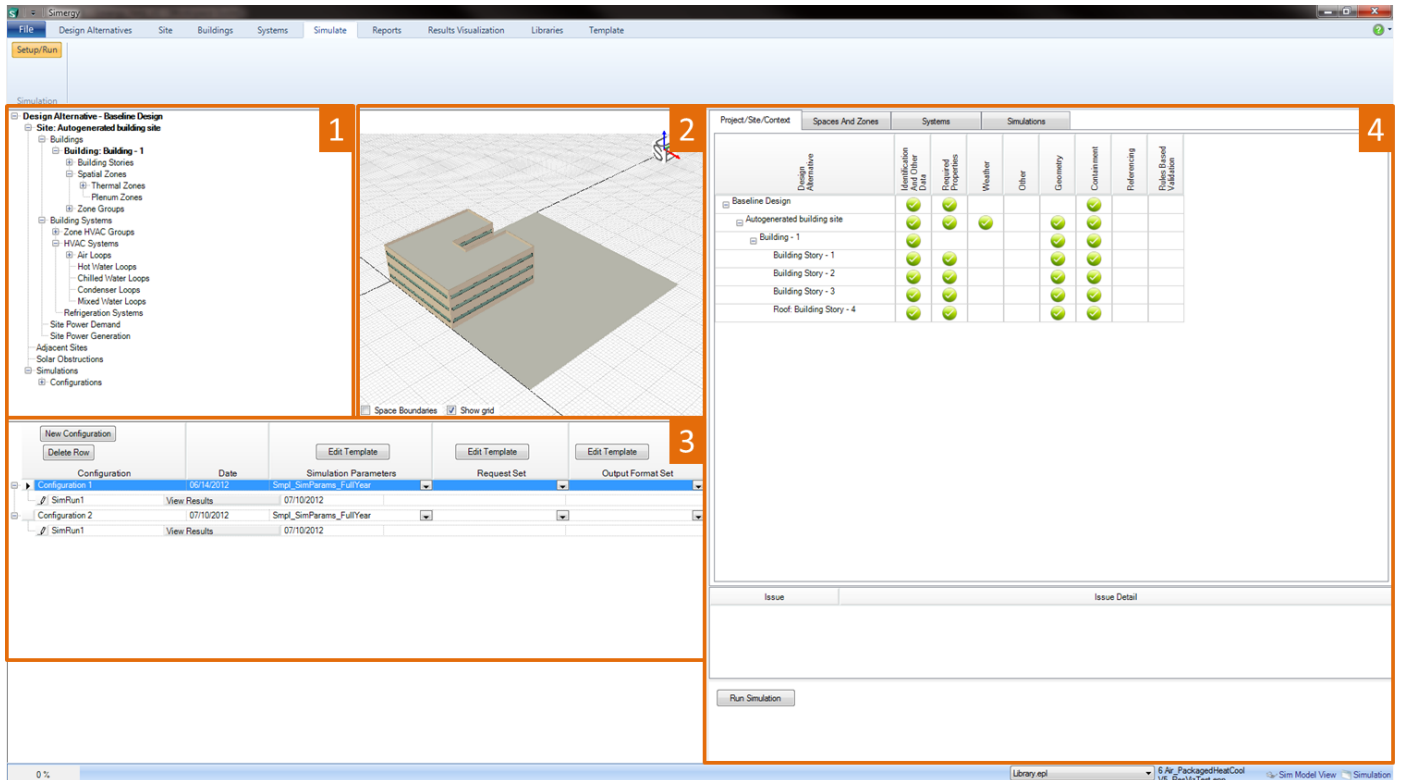
connectors can be added, shapes can be moved or relocated, controls can be hidden, components can be selected to display their properties on the lower left of the workspace, the Air Loop can be validated and a number of other capabilities are at the users fingertips (think tip of the iceberg).

5. **System Level Controls** - contains a tab for loop level controls and validation results. The user can set priorities for Plant Operation Schemes, Availability Managers and Demand Managers by selecting Properties, which displays a pop-up dialog where objects can be selected from the drop down list and then an available scheme can be selected. Once these have been defined summary information (priority and object type) will be displayed. The properties dialogs across all three differ, so it would be useful for the user to review those capabilities. On the validation results tab, if the user selects *Validate* on the HVAC diagramming canvas the validation results (name, system issue to be fixed, and error type) will be displayed on this tab.

[Workspace Guide](#)

Simulate Workspace

The Simulate workspace allows the user to set up multiple configurations for simulations and associate templates (Simulation Parameters, Request Set, Output Format Set) with them as well. In addition, users can review the status of the validation dashboard for the BEM as well.



The Site Workspace is comprised of four fields:

1. [Project/Component Tree](#) (top left) - allows the user to see the connections of different components for the project. Serves more as a tool to review connections versus a tool that enables the simulation workspace
2. [Interactive 3D Model View](#) (middle top) - provides the user a 3d interactive view of the current model
3. [Simulation Configurations](#) (bottom left) - the main field where users will do a majority of their work within this workspace. New configurations can be added and/or edited. In addition, templates for *simulation parameters*, *Request Sets* and *output format sets* can be selected from the available options in the drop down list or edited directly by selecting the *edit template* button.
4. [Validation Dashboard](#) (right) - enables the user to quickly review if there are any problem areas within the BEM by visually checking the four tabs (Project/Site/Context, Spaces and Zones, Systems and Simulations) to see if there are any warnings (orange circle with exclamation point) or errors (red circle with "X") that need to be addressed. More information can be obtained about the warning or error by selecting on the icon directly. An explanation of the issue and issue detail will appear in the table below.

[Workspace Guide](#)

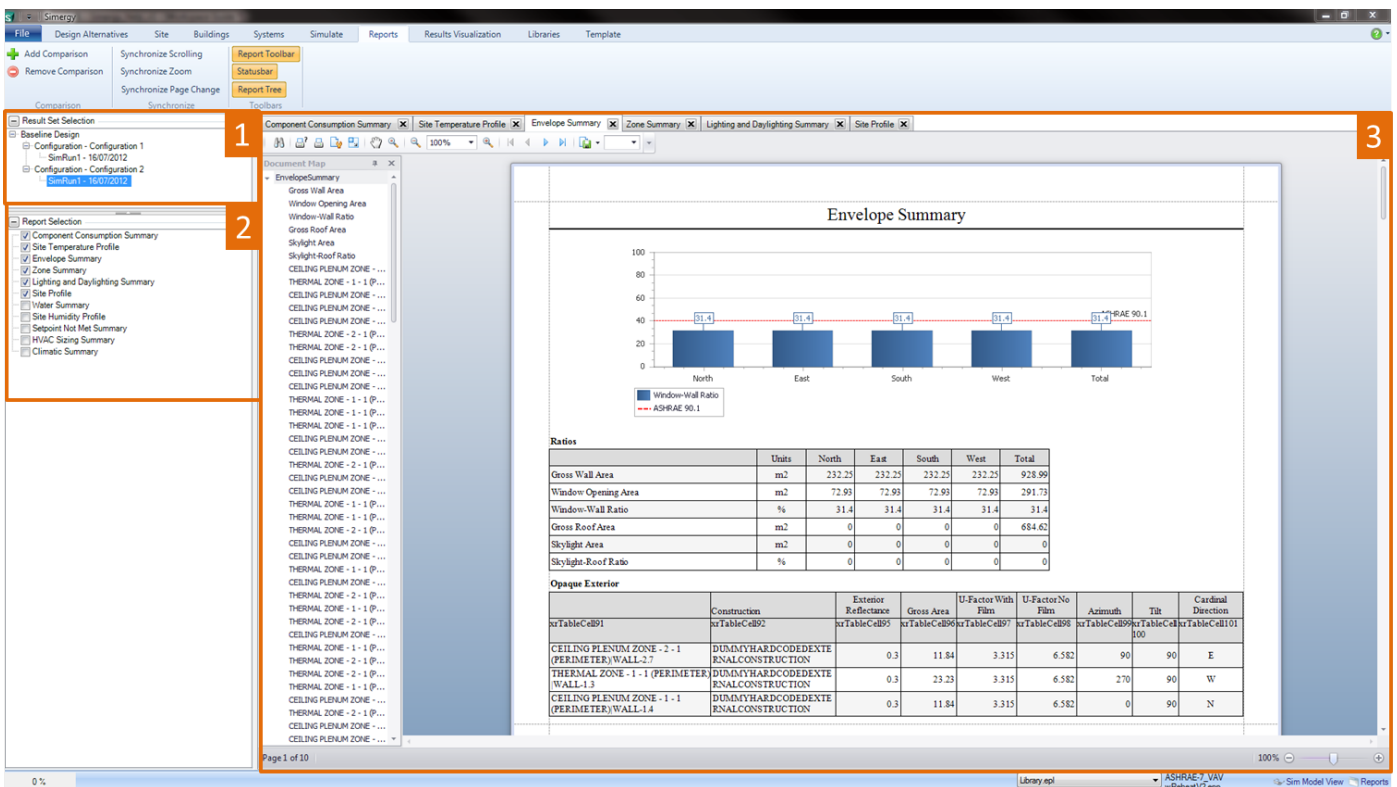
Reports Workspace

The Reports workspace allows the user to review individual, multiple or the set of pre-defined reports to assess what investigations would be useful to do within Results Visualization.

The Ribbon includes three sections:

- **Toolbars**

Allows the user to hide or turn back on different fields within the workspace. By default all workspace fields are turned on.



The Reports Workspace is comprised of:

1. **Results Set Selection** - displays what simulation configuration runs are available with the Simergy file for selection
2. **Report Selection** - The list of available report types. By selecting the check box the report is displayed in the Report Viewing Field. The user can select and deselect reports at any time.
3. **Report Viewing** - the display area for the pre-defined reports, which are typically a combination of charts and tables, allowing the results to be represented in different ways. When multiple reports have been selected in the Report Selection Field tabs with the Report names will start to appear across the top of the workspace. If the user wants to move between reports all they need to do is select the tab to display that report.

- **Comparison**

By selecting *Add Comparison* the user can add a view to the reports viewing area so that reports can be viewed side by side.

By selecting *Remove Comparison* the active reports view will be removed.

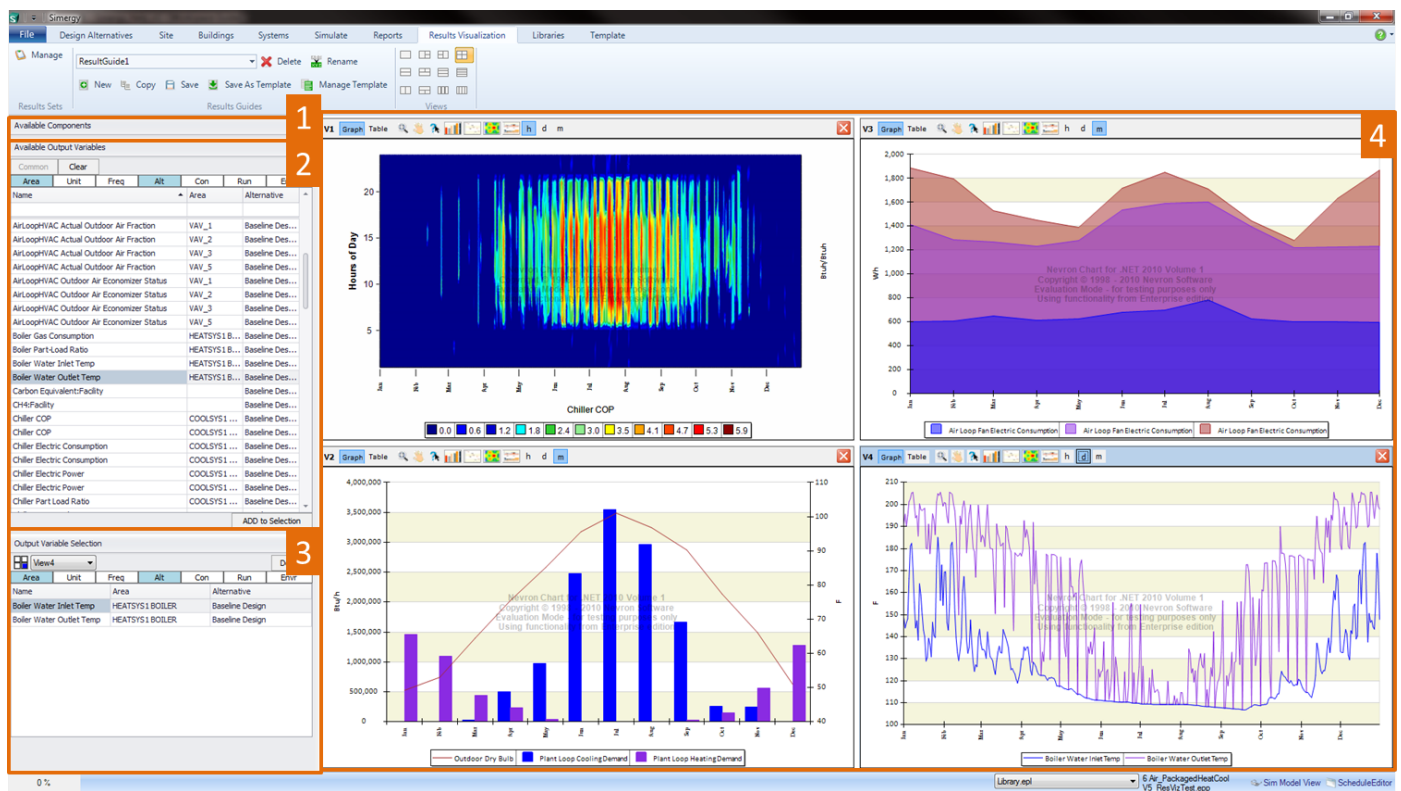
- **Synchronize**

Provides controls to enable synchronized movements between multiple report views in terms of scrolling, zooming and page changes.

[Workspace Guide](#)

Results Visualization Workspace

The Results Visualization workspace (ResViz) allows the user to interrogate the output variables that were included in the Output Request Set (OPR) that was selected/defined pre-simulation and visualize and investigate the results in a number of ways. The user can set up views in any of a number of different chart types or they can view the results in tabular format. Sets of 1-4 views can be saved as a Results Screen to be revisited for this project at a later time or the view set can be saved as a Results Screen Template and used across multiple projects. In addition, a set of Results Screen Templates are included with Simergy, so that users can utilize them as a starting point for viewing results.



The Results Visualization Workspace is comprised of four fields, in addition to the Ribbon which is described below:

1. Available Components (Results Visualization Component Tree)

By default this field is compressed to provide more area for the Available Output Variables and Output Variable Selection Fields. The Component Tree allows the user to view what components are associated with the Zone HVAC Groups and the HVAC Systems including the Air and Water Loops. Depending on what Output Variables are included in the Output Request Set, the component tree can be used to filter the Output Variable set by double clicking on a component. If there are Output Variables associated with that component in the Output Request Set, then they will be displayed in the Available Output Variables table. Otherwise this table will appear empty.

2. Available Output Variables

Displays the Output Variables that are available to the user to incorporate into Results Views. The list is determined by the Output Variables that are defined in the Output Request Set library that is established

pre-simulation. The table contains a number of ways that the Output Variables Set can be filtered, so that they can be managed by the user more effectively to obtain the desired Output Variable selection. Once identified and selected the user can then select ADD to Selection, which will add that Output Variable to the Output Variable Selection table and incorporate it into the active Results View.

Tip: Simulation time and the size of the Results file are directly affected by the number of Output Variables that are included in the OPR. This is the main reason that users do not select all of the >10,000 output variables and meters that available in EnergyPlus. It is important for the user to put some thought to what output variables they will want to investigate and interrogate in Results Visualization, so that they can include them in the Output Request Set (ORS) library. Because if the user is looking to view the results for an output variable that is not part of the ORS, then they will need to go back and add that Output Variable and rerun the simulation.

3. Output Variable Selection

The table where the Output Variables associated with the current Results View are displayed. If there is more than one Results View the user can change the active Results View by either selecting from the drop down list above the table or selecting the view directly. Changing the active view will change the Output Variables shown in the table. The columns in the table can be varied by selecting the [column headers](#) shown below the view drop down list. The user can toggle on/off the columns displayed in the table below by either selecting (colored) or deselecting the [column header](#). In addition, the user can delete Output Variables from the table and ultimately the current view by selecting the output variable and then selecting [delete](#).

4. Results Views (1-4 views)

The Results View field can be configured in a number of different combinations of 1 to 4 views based on the view configuration icon that has been selected from the ribbon. For each view the user has the ability to view it as either a chart or a graph. The format and appearance properties can be accessed by having the mouse located within the view and right clicking and selecting properties. The user has a number of edge controls on each view that allow them to zoom, pan, data track, change the chart type (9 options) and change the frequency displayed (5 options).

Tip: Any information displayed in a Results View can be captured and/or exported by moving the mouse into the view and right clicking to access the Export, Copy and Print capabilities

Ribbon

The Ribbon includes three sections (although the areas of the workspace do not change):

- **Results Sets**

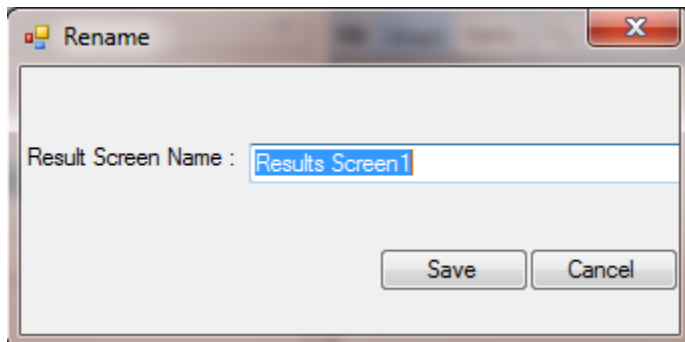
[Manage](#) - A pop-up dialog box that allows the user to select which simulation runs (Simulation Configurations) they want to view the output variables for. Once a Results Set is selected the Output Variables associated with it are added to the Available Output Variables table, which is the source for Output Variables that can be selected, which adds them to the Output Variable Selection and to the current view.

- **Results Screens**

[Results Screen Options](#) - The available Results Screen selections active for this model. If the user is

visiting the ResViz workspace for the first time for a model the default in this field will be Results Screen 1, and other options will not be available from the drop down list. By selecting different Results Screens the information shown in the different fields and views within the workspace will change.

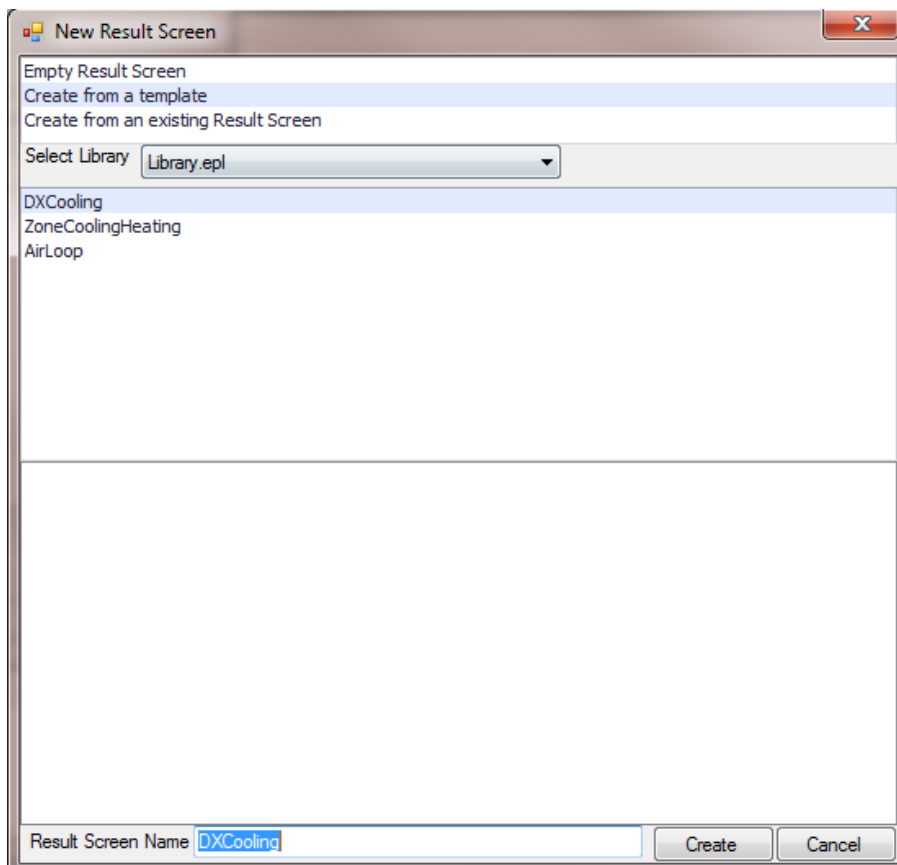
Rename - A pop-up dialog box that allows the user to change the name of the current Results Screen. After edits are completed and **Save** is selected the new name will be displayed in the Results Screen Options field.



Delete - Allows the user to delete the current Results Screen from the model.

Note: If a Result Screen Template has been used as a starting point for a Results Screen and then saved as a Results Screen, if it is deleted only the Results Screen is deleted from the model, the Results Screen Template is not deleted.

New - A pop-up dialog that provides the user three options as a starting point for creating the Result Screen, which include starting with a **Empty Result Screen** , **Create from a Result Screen Template** or **Create from an existing Result Screen** . Selecting either the second or third option (shown below) provides a list of the available options for selection. In addition, the user can define the name for the new Result Screen.

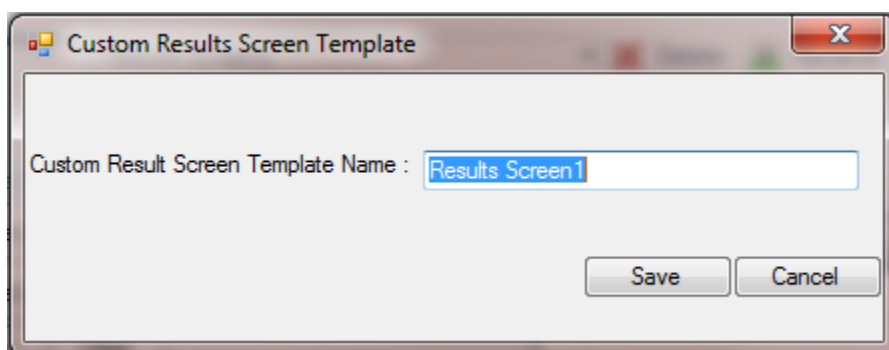


Copy - makes a copy of the current Results Screen. The copy becomes the current Results Screen and the new name shown in the *Results Screen Options field* is the previous Results Screen name prefaced by "Copy of". The name can be changed by selecting *Rename* . If the user selects the arrow to expose the drop down list for the *Results Screen Options field* they will see the previous Results Screen is part of the list.

Save - saves changes made to the current Results Screen.

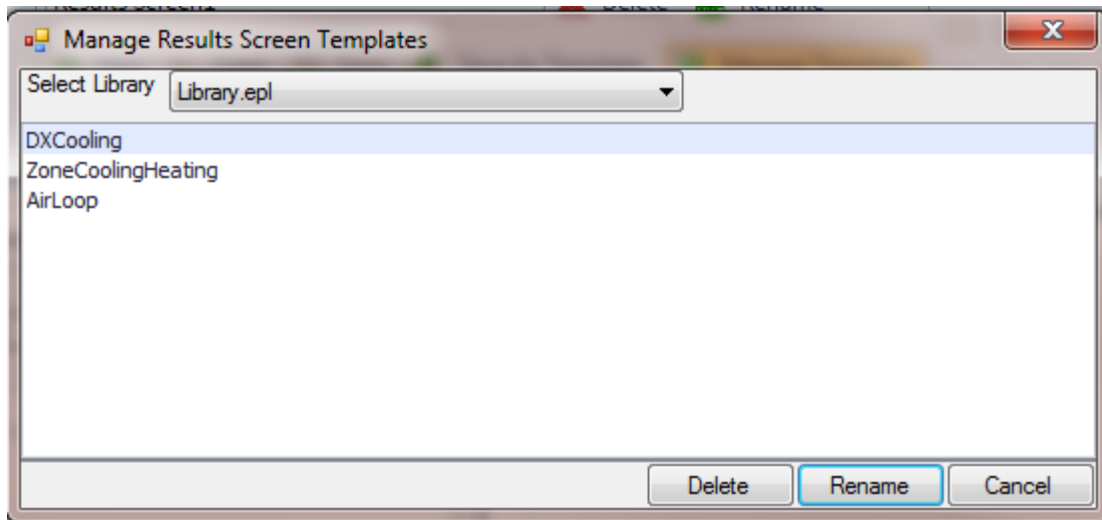
Save as Template - A pop-up dialog that allows the user to save the current Results Screen as a Results Screen Template enabling it to be saved to the Library and used across multiple projects.

Note: For a Results Screen Template to be 'Fully Active' within another project the Output Variables that are part of the saved views will need to be in the Output Request Set for the other models.



Manage Template - Provides the user the ability to change Libraries without going to File/Options, so that they can access Results Screen Templates that they may want to use that are associated with

different Libraries. The Select Library drop down list will present the user the four options for Libraries that have been selected in the File/Options Dialog and the option to select Project Model. When a Library has been selected the Results Screen Templates that are available are displayed. The user can Rename or Delete the Results Screen Template within this dialog, but they cannot select it to include in the project. To do that the user selects *New* and they select *Create from Result Screen Template* in the dialog the list of Results Screen Templates that was shown in the *Manage Template* dialog will be displayed and can be selected.



- **Views**

View Configuration Icons - The twelve view configuration options provide the user the ability to shape the Results View Field in a number of different ways utilizing one to four views.

[Workspace Guide](#)

Libraries Workspace

The Libraries tab provides the user the ability to view the selected Library database of EnergyPlus variables by using selection filters to identify a targeted subset and create Library Entries for different Library categories. *Tip: The previous sentence used a form of the word 'Library' four times, so it might be useful to review the [FAQ: How is a Library and Library Entry different?](#)*

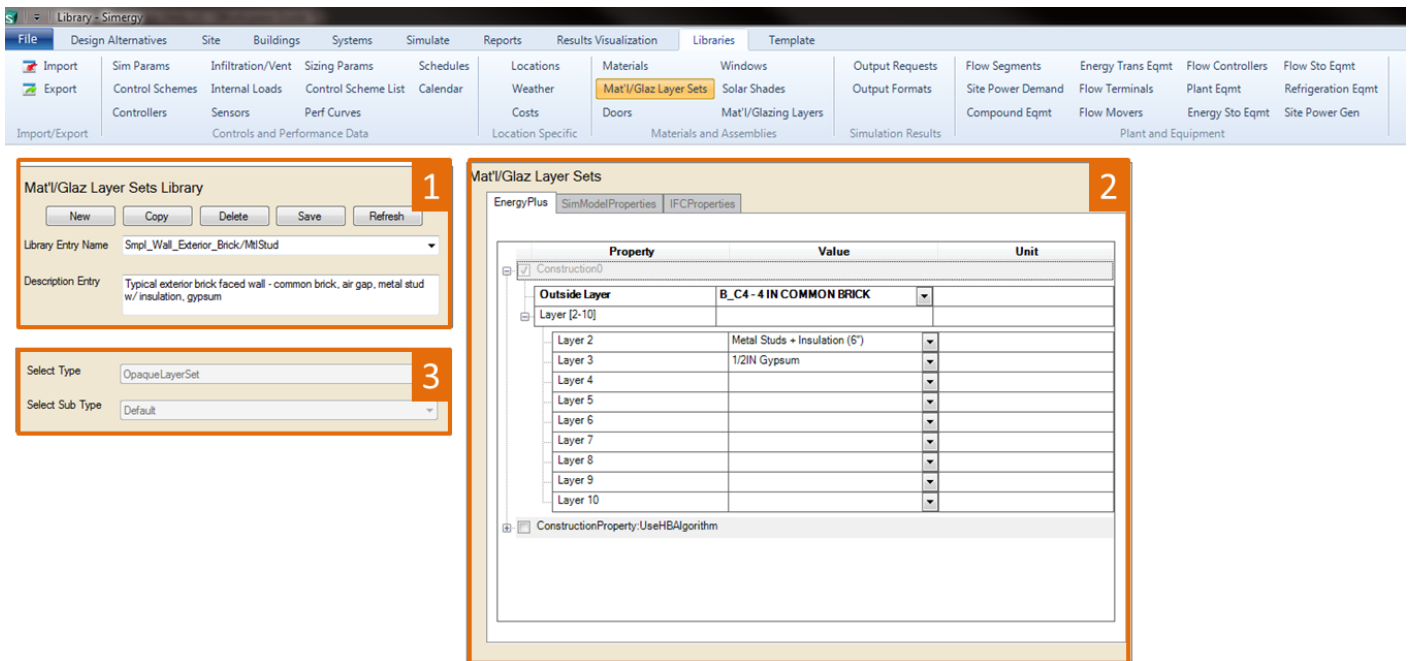
The user can select library entries from previously assembled library entries (Library Entry Name) and/or create new ones by selecting a combination of type and sub-types to generate a set of variables. Library entries are used in both Templates and in simulation projects. There are a large number of library types that are available within the Ribbon categories.

The Ribbon contains six capability areas that not including Import/Export contain thirty-four (34) Library Entry Categories. However across that set there are really on three (3) different workspace types. The table identifies the ribbon area where the two unique workspaces are located and expresses how the other ribbon categories utilize the Typical Library Workspace

| | |
|--|---|
| Import/Export (common) | Materials and Assemblies (typical) |
| Controls and Performance Data (typical, Schedules, Calendar) | Simulation Results (typical) |
| Location Specific (typical) | Plants and Equipment (typical) |

Typical Library Workspace

There may be some differences between the thirty-two Library Entry category workspaces, however they are not substantial enough to classify as a different workspace type. Since the user might have the need to engage thirty-two (32) workspaces that have a similar setup, it could be beneficial to get very familiar with the different capabilities. If something is reused that many times, there must be some power under the hood!



Some key things to keep in mind:

- The Library the user selects from File/Options/Library/Template Preferences or from the drop down list on the bottom right side of a majority of workspaces = the Database the user is working with
- There are a set of Library Entries set up for the different Library Entry Categories that come with Simergy
- Custom Library Entries can be set up by the user selecting a type and sub-type, selecting the desired variables and then inputting a name and saving the Custom Library Entry.

Tip: Confused yet? It might be useful to review the [FAQ: How is a Library and Library Entry different?](#) Note, we haven't even included templates in the discussion yet!

There are three (3) main areas in the standard library workspace, which do separate things, but also can work in combination:

1. **Library Entry Selection** – this is where the user can select from the 'already created Library Entries set for this Library Entry Category' on the drop down list. Already created is defined as 'came with Simergy' or 'was previously created by the user'. After a Library Entry has been selected a variable list and potential values appear in the Library Entry Variables table, and the Type and Sub Type fields 'grey out' and are not operational. The user can then change the variables and/or variables included in the Library Entry and *Save* it or the user select *Copy*, change the name and then select *Save* to create a New version of the Library Entry.
2. **Select Type and Sub-Type** - attacking the Library Database in another way the user can select a Type from the drop down list, which will influence what Sub Types are available for selection. After the Sub

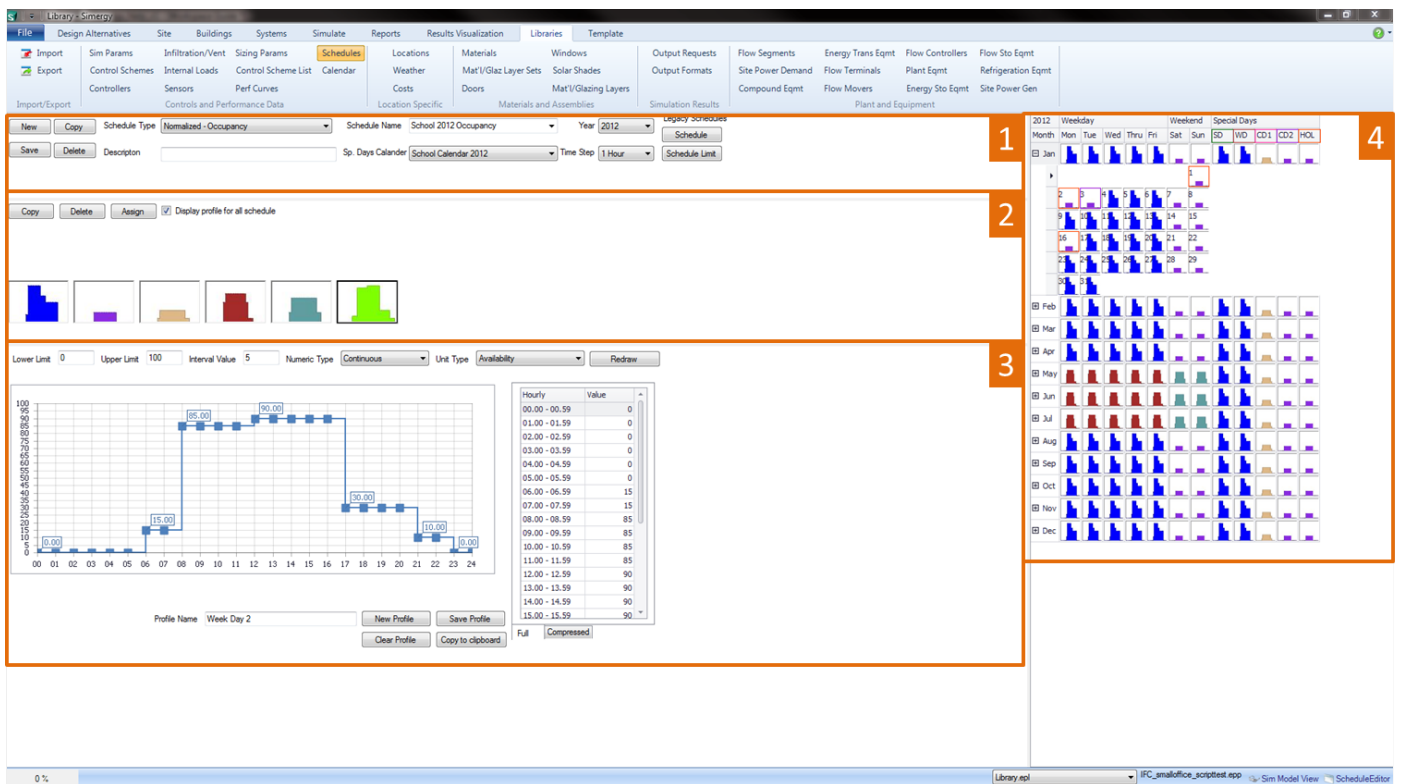
Type has been selected the list of Library Entries now available in the Library Entry Name drop down in the Library Entry Selection field has been filtered. The user then has the same capabilities as described above.

- Library Entry Variables** – The field where the output variables in the selected, created or filtered library entries are shown. In addition, the user can select, turn-off and/or edit the variables to refine the library entry composition, and they use the *New, Copy, Delete and Save* buttons to work with and/or create new Library Entries.

Mindset Tip: Think about a Library and Library Entries in the same way as Geometry and Pre-defined Geometry shapes. Simergy allows a user to select pre-defined geometry shapes to create building forms quicker (a lot of the work is already done), which may satisfy a high percentage of the user's needs. However if the user to create custom geometry, they can use the Free Form tool to do that. In a similar way the Library Entries and Library Entry Categories do a lot of the leg work for the user, but if they find they need other combinations of variables and values they can create Custom Library Entries.

Schedules

The Schedules workspace is a core capability to gain a strong understanding of within Simergy, so that you can effectively create and customize schedules and schedule profiles. Plus it can be a bit entertaining to see the resulting artwork that gets created within the Year Schedule Workbook.



Main workspace areas:

- Schedule Type and Schedule Name** - this is where the higher level schedule controls are that set the context for creating a schedule (Schedule Type), allow access to previously created schedule types (Schedule Name), allow user to attach a Special Days Calendar, utilize New, Copy, Save, Delete and other

fun and entertaining capabilities.

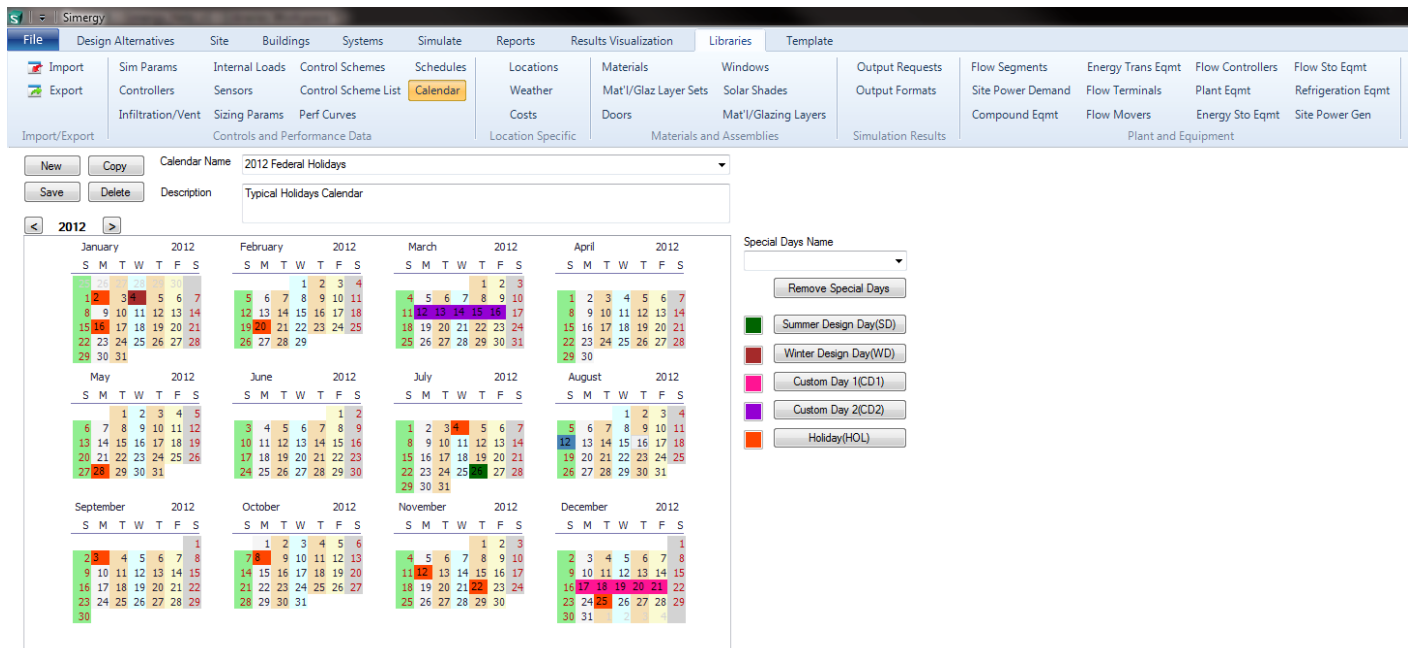
2. **Profile Workbook** - where profiles for the different schedule types that the user has created are stored and visualized. Users can drag and drop profiles from here onto the Year Schedule Workbook.
3. **Graphic Profile Editor** - this is where the user can build and edit profiles. The user starting at the left side can drag and draw to create the profile, select certain values to build the profile, select a previous point value and move it up or down or enter a value into the table on the right.
4. **Year Schedule Workbook** - this is the playground where the user can start to build the yearly schedule and visualize where there are potential holes, if they go to save the schedule (schedule name) and they are not able to because a profile has not been added to each day of the year. Profiles can be dragged and dropped from the Profile Workbook.

Tip: There a number of interesting and unique capabilities in this workspace. Watch the Schedules and Calendars video!

Tip: Dragging and Dropping a profile from the workbook onto the Name of the Year on the top left of the Year Schedule Workbook fills every cell in the Year Schedule Workbook with that profile! In addition the user can drag and drop profiles on the other column headers, such as Weekday or Tues to quickly start to populate the Year Schedule Workbook.

Calendar

The workspace where the user can set up a calendar for the year that contains a number of different day types that can then be overlaid onto the Year Schedule Workbook enabling the use of Special Day type profiles.



Main workspace areas:

1. **Calendar Naming and Controls** - user can select a previously created calendar to view, review or edit or they can create a new one by typing in a new name and using the controls (New, Save, Copy, Delete)
2. **Calendar Year** - the interactive display of the months, days and days of the week for the calendar year selected. The current year is the default. Users can select individual days; multiple continuous days by selecting a day and dragging one direction or the other with the mouse button still compressed or by

selecting one day, holding down the shift key and then selecting the end day for the period; or select multiple discontinuous days and/or ranges of days by making selections while holding down the control key.

3. **Custom Day Controls** - by selecting a day or range of days on the calendar, type a name in the Special Days Name field and then select a type of Special Day Button. The result is that the day or range of days on the calendar year will now be shown in the color corresponding to the Special Day type that was selected. The Special Days types correspond to the Special Days shown on the right side of the Year Schedule Workbook. So, if a calendar contains a number of days of a special day type, and that special days calendar is associated with a schedule, when the user drags and drops a profile onto that special day, the profile will be displayed on every day of the year that the special day type had been applied to.

Tip: Don't be confused by the drop down arrow. Some fields in Simergy serve dual purposes. In the case of the Special Days Name field it is both a drop down list and a text entry field!

[Workspace Guide](#)

Templates Workspace

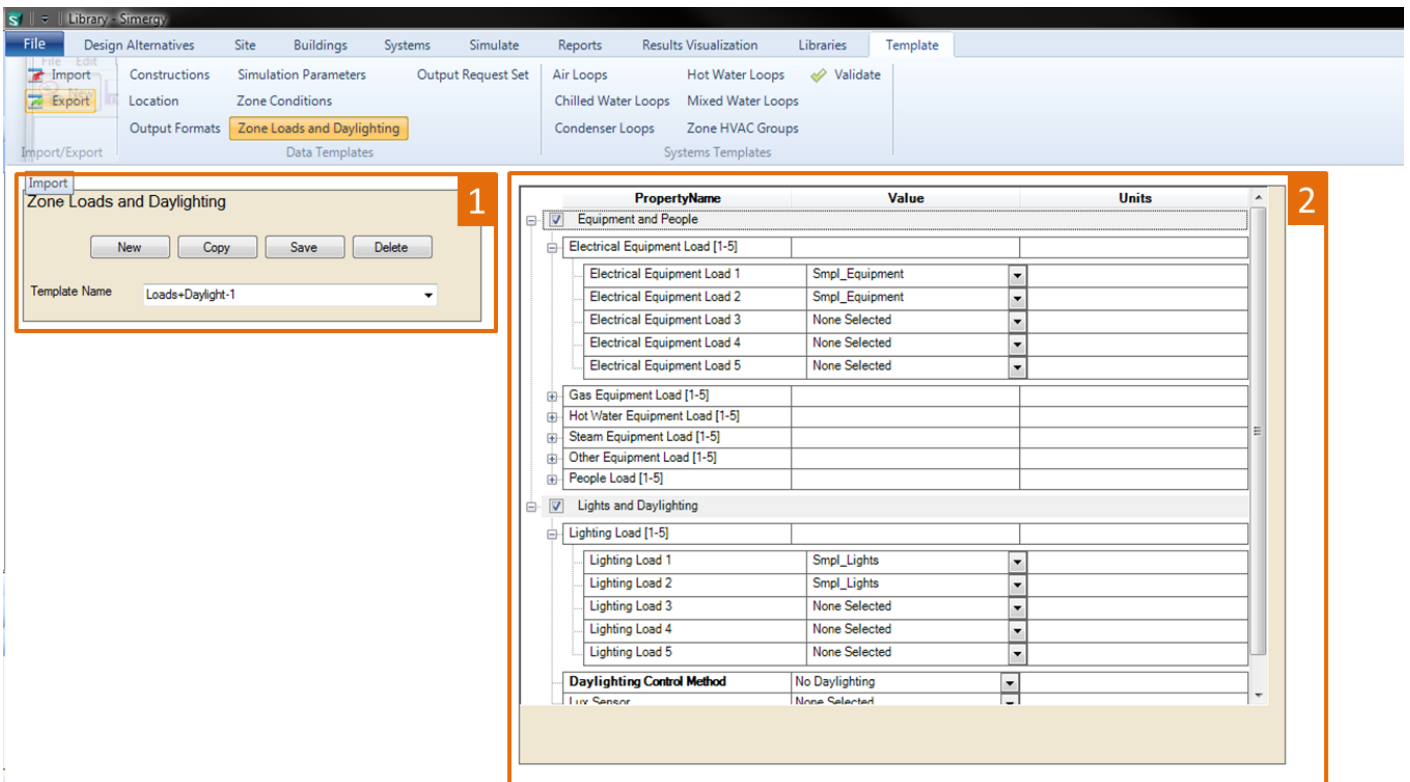
The workspace provides the user the ability to assemble new templates or view ones that have been previously created in different source libraries..

Across the three Ribbon categories of capabilities there are four unique workspace types, excluding the common Import/Export workspace.

| | |
|-------------------------------------|--|
| Import/Export (common) | System Templates - Air Loops and Water Loops |
| Data Templates - Typical | System Templates - Zone HVAC Groups |
| Data Templates - Output Request Set | |

Data Templates - Typical

Provides the user the ability to view templates that are included with Simergy Source Libraries, adapt those templates to create new ones, or to build custom templates in combinations of ways. The Source Library can be changed by selecting a different one from the drop down list on the bottom right of the different workspaces.



Main workspace areas:

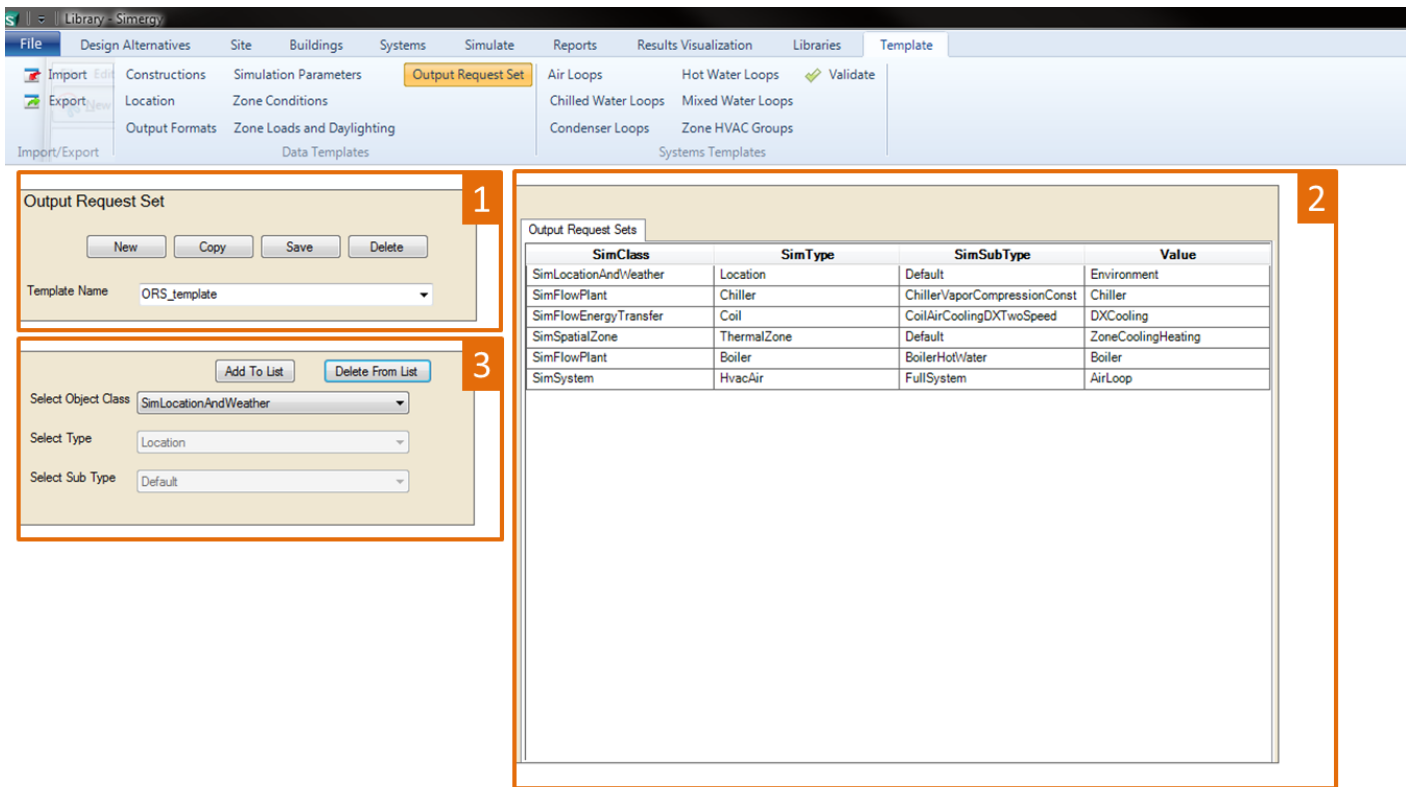
1. **Template Selection and Controls** - allows the user to select a template from the drop down list to either view or start editing depending on the Template Category workspace that has been selected in the ribbon. If changes are made to the template selected the user has the option to Save the changes, Copy the existing and rename, create a New Template. or even delete a template.
2. **Variables and Input Values Table** - the table will present information in a number of different ways. The user can select a template from the Template Name drop down list and the table will display all of information included in that template. The information may not be fully exposed to the user because of the compression of different categories, so it is important to expand all the "+" icons to gain full understanding of the information included. By default all of the categories will be "grayed out", but they can be activated by selecting the check box for the section. It is also important to note that the variables shown in bold are variables that require values be input to enable EnergyPlus to simulate. Another option is to select New from the Template Selection and Controls field, which provides the user a blank slate and gives them access to all the variables that are associated with that Template type to begin to build a new template. The user should Just remember to type a name in and hit Save when the selections are complete.

Tip: It is impossible to describe all the different ways that the templates workspaces can be used, so we encourage users to spend some time exploring on their own and reviewing the videos to generate ideas.

[Workspace Guide](#)

Data Templates - Output Request Set

This workspace is a very important one because it enables the user to develop Output Request Sets for their simulation runs. The importance of the user selections here is that they will dictate what output variables they have available to view, investigate and interrogate results.



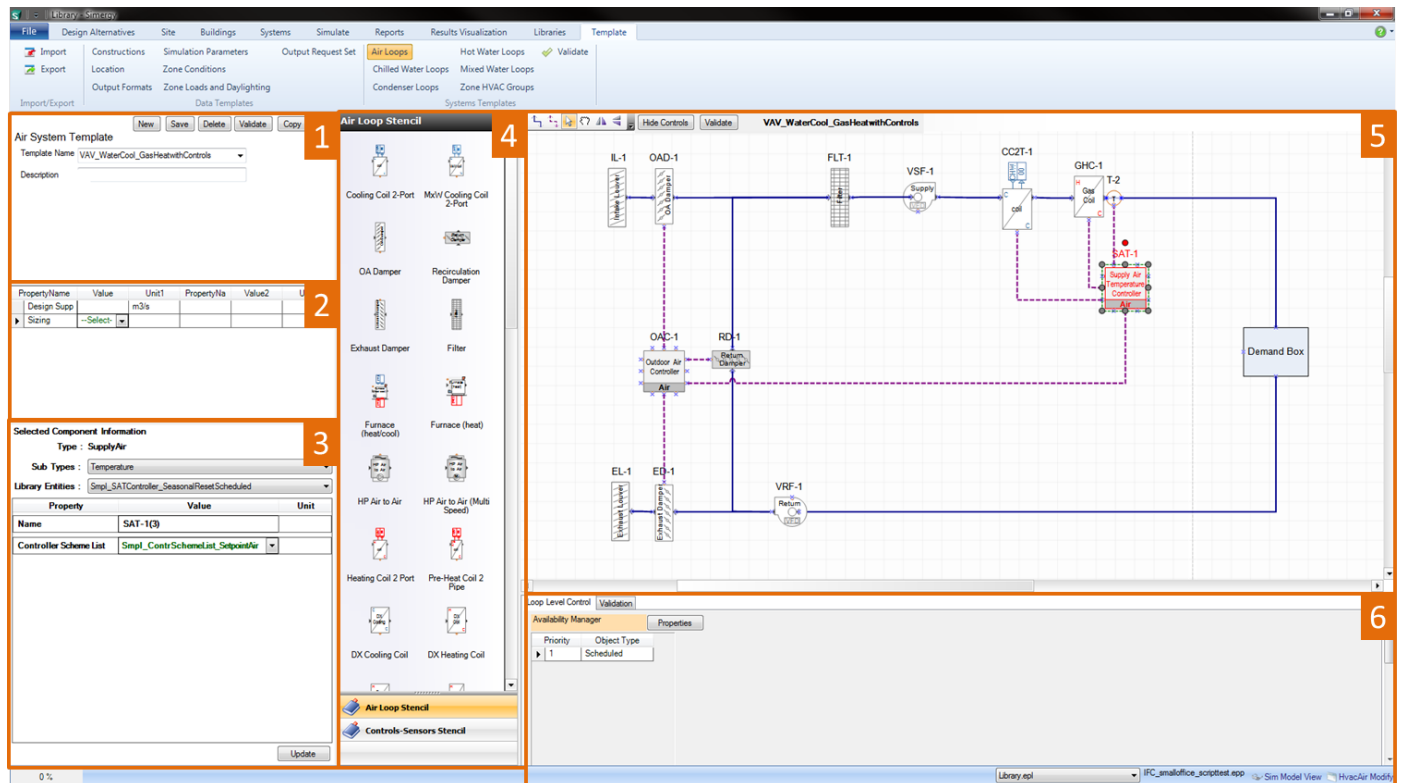
Main workspace areas:

- 1. Template Selection and Controls** - allows the user to select a template from the drop down list to either view or start editing an Output Request Set Template. Once selected information will appear in both of the other fields. If changes are made to the template selected the user has the option to *Save* the changes, *Copy* the existing and rename, create a *New* Template. or even *Delete* a template.
- 2. Output Request Set Variables and Values** - The user can select a template from the *Template Name* drop down list and the table will display all of output variables included in that template for the four columns of *SimClass*, *SimType*, *SimSubType* and *Value*. Note that the first three columns are the same as the three selection lines in the next field, although they are named differently. The first three columns can be a guide to identifying the pathway to other output variable options to include in the Output Request Set. Just remember that EnergyPlus contains more than 10,000 output variable and meter options to select from. The *Value* column provides a drop down list displaying alternative values for selection, if they exist.
- 3. Selection of Object Class, Type and Sub-type** - allows the user to filter the source library database by selecting *object class*, *type*, and *sub type* from the drop down lists. Once the object class is selected then default selections for type and sub type appear and the options available in these two drop down lists is influenced by the previous selection. Once the desired combination is determined by the user they can select *Add to List* to have it included on the *Output Request Sets table*. The trio of selections will also be displayed when a selection is made from the Template Name drop down list providing additional context. To use *Delete From List* and remove rows from the *Output Request Sets table* the user needs to highlight a complete row in the table and then select *Delete From List*.

[Workspace Guide](#)

System Templates - Air Loops and Water Loops

A powerful set of workspaces where Air Loop and Water Loop System Templates that are packaged with Simergy and/or constructed by others can be reviewed, edited and built. The Loop Level System Templates can be used to more quickly and effectively configure HVAC system designs in the BEM. The workspaces across the Air Loops and Water Loops are similar, so they are grouped into one category and they are a combination of the capabilities shown in both the Create/Edit and Diagram System Workspaces.



Main workspace areas:

1. **Air Loop Template Selection and Controls** - allows the user to select a Template Name to start with based on the current Source Library (selection on lower right side of workspace). In addition the user can utilize the controls to create a New template, Save one that has been edited, Copy a template, Delete one and also Validate a template that has been created or adapted. *Tip: The Template Name field serves both as a drop down selection and a text entry field to change or create a new name.*
2. **Air System Parameters** (bottom right) - allows the user to set parameters, such as sizing criteria, at the overall Air Loop level.
3. **Selected Component Information (Shape Component Properties)** - when the user selects a component from the HVAC diagramming canvas property information will appear in this field. The type of properties displayed will vary significantly component to component, however the line items shown above the table are common fields. For those users that are familiar with the Input Data File (IDF) structure, the property list for each component is aligned with that list. For each component Type, Sub Types and Library Entities will be shown, while shapes that contain off-page reference tags will potentially have up to four additional line items for each of the water loop types (HW, CHW, MxW, CW). *Tip: Make sure a component has a Library Entity specified, otherwise the BEM will not simulate.*
4. **HVAC diagramming stencils** - Air Loop and Controls & Sensors stencils are both options to the user. They

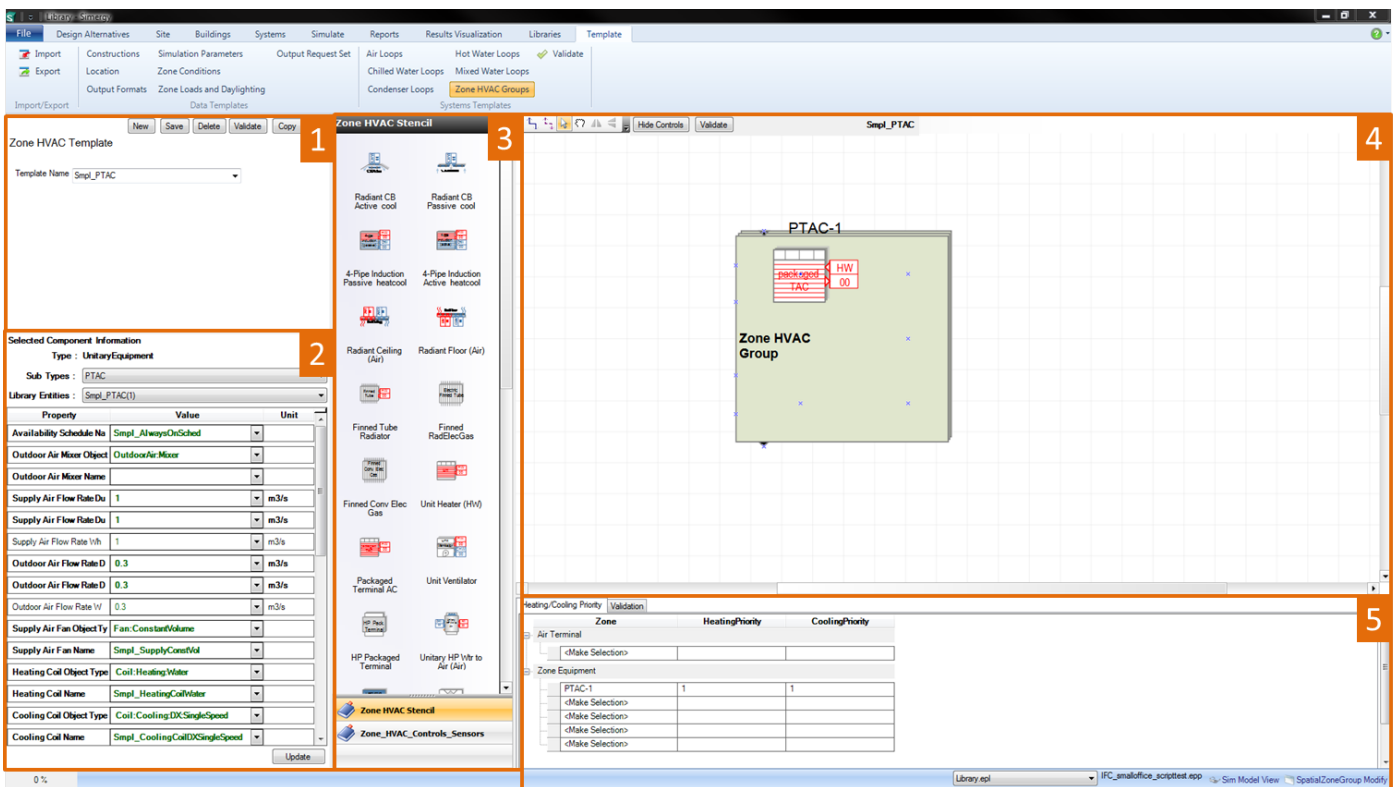
are made active by just selecting on the stencil title. The Air Loop stencil is the default and shows icons with titles to describe the available Air Loop shape components that can be incorporated into the Air Loop. Shape components can be selected from the Stencil and then dragged and dropped on the HVAC diagramming canvas to be incorporated into the current Air Loop. Each shape component has anchor points (blue x), which assist placing the shape components, as well as adding connections.

5. [HVAC diagramming canvas](#) - paints the interactive picture of the components, sensors and controls associated with the Air Loops. New components can be added from the stencils to either the supply side or the demand side, however if the user wants to change the components within the Zone HVAC Group it is recommended that it be done in the Zone HVAC Diagram workspace. New connections and connectors can be added, shapes can be moved or relocated, controls can be hidden, components can be selected to display their properties on the lower left of the workspace, the Air Loop can be validated and a number of other capabilities are at the users fingertips (think tip of the iceberg). *Tip: if the user is making edits to an Air Loop design or building one from scratch, it is recommended to validate early and often to reduce potential issues later in the BEM development process.*
6. [System Level Controls/Validation](#) - contains a tab for loop level controls and validation results. The user can set priorities for Availability Managers by selecting Properties, which displays a pop-up dialog where objects can be selected from the drop down list and then an available scheme can be selected. Once these have been defined summary information (priority and object type) will be displayed. On the validation results tab, if the user selects *Validate* from the Air Loop Template Selection and Controls field the validation results (name, system issue to be fixed, and error type) will be displayed here.

[Workspace Guide](#)

System Templates - Zone HVAC Groups

A powerful workspace for the user to become familiar with where Zone HVAC Templates that are packaged with Simergy and/or constructed by others can be reviewed, edited and built. The Zone HVAC Groups are key pieces that can be used to design different types HVAC systems for the BEM. The Zone HVAC Groups Template workspace is a combination of the Zone HVAC Group Create/Edit and Diagram Workspaces found on the Systems tab.



Main workspace areas:

- Zone HVAC Template Selection** - allows the user to select a Template Name to start with based on the current Source Library (selection on lower right side of workspace). In addition the user can utilize the controls to create a New template, Save one that has been edited, Copy a template, Delete one and also Validate a template that has been created or adapted. *Tip: The Template Name field serves both as a drop down selection and a text entry field to change or create a new name.*
- Selected Component Information (Shape Component Properties)** - when the user selects a component from the HVAC diagramming canvas property information will appear in this field. The type of properties displayed will vary significantly component to component, however the line items shown above the table are common fields. For those users that are familiar with the Input Data File (IDF) structure, the property list for each component is aligned with that list. For each component Type, Sub Types and Library Entities will be shown, while shapes that contain off-page reference tags will potentially have up to four additional line items for each of the water loop types (HW, CHW, MxW, CW). *Tips: Make sure a component has a Library Entity specified, otherwise the BEM will not simulate. If a property is displayed in Bold Text it is required to have a value to simulate EnergyPlus*
- HVAC diagramming stencils** - Zone HVAC Stencil and Zone HVAC Controls & Sensors stencils are both options to the user and they are made active by just selecting on the stencil title. The Zone HVAC stencil is the default and shows icons with titles to describe the available Zone HVAC equipment that can be incorporated into the Zone HVAC Group. Shape components can be selected from the Stencil and then dragged and dropped on the HVAC diagramming canvas to be incorporated into the Zone HVAC Group. Each shape component has anchor points, which assist placing the shape components. Those anchor points will snap to the anchor points (blue x) that are located within the Zone HVAC Group shape and indicate a maximum number of shape components that can be associated with a Zone HVAC Group.
- HVAC diagramming canvas** - paints the interactive picture of the components, sensors and controls

associated with the Zone HVAC Group. New components can be added from the stencils within the Zone HVAC Group shape or outside of it (Air Terminal Shape variations, shared supply and/or return plenums and controllers), new connections and connectors can be added, shapes can be moved or relocated, controls can be hidden, components can be selected to display their properties on the lower left of the workspace, the Zone HVAC Group can be validated and a number of other capabilities are at the users fingertips (think tip of the iceberg). For example, if an air terminal component is selected and the user wants to change the sub type, then can select a different one in the component properties and when they select update the air terminal shape will change to the new sub type that has been selected. *Tip: Note that when a user is editing a Zone HVAC Group when they leave that workspace it is automatically saved*

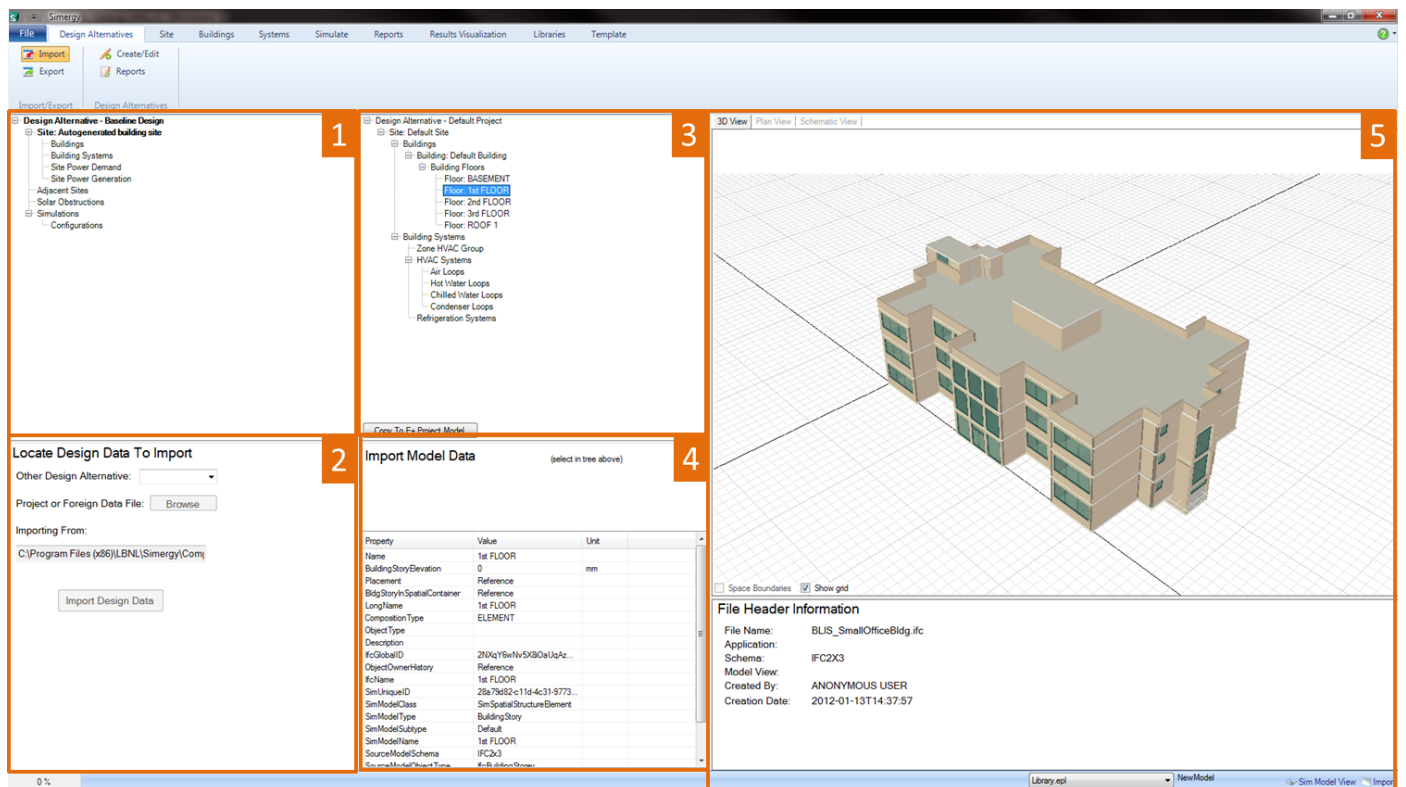
5. **System Level Controls** / Validation -This field has tabs for setting the heating/cooling priority and a second tab for displaying validation findings. The user can set the heating and cooling priority for air terminals and zone equipment separately. When equipment is added to the Zone HVAC Group the name of the component will automatically be added to the table. To set the priority the user must select the priority number for both heating and cooling from the drop down list. On the validation results tab, if the user selects *Validate* from the Air Loop Template Selection and Controls field the validation results (name, system issue to be fixed, and error type) will be displayed here.

[Workspace Guide](#)

Import/Export - Import

The workspace that provides users the ability to import Industry Foundation Class (IFC) models into Simergy. This is where the BIM to BEM magic starts...

Tip: importing a DWG/DXF file into Simergy can be done from the 2d Building Canvas view on the Site and Buildings tabs.



Main workspace areas:

- Project/Component Tree** (top left) - displays the tree for the current Design Alternative and allows the user to see the connections for the different components of the model.
- Import Design Locate** (bottom left) - the user can select which Design Alternative they are wanting to work with, *Browse* to the desired file (IFC 2.3/IDF) to select and begin the import process. Once a file is selected the path will be displayed in the *Importing From* field, and the next step is to select *Import Design Data*. *Tip: If interested in trying it out there are sample IFC projects packaged with Simergy that can be used as imports. They are located within the Program files folder (or the location where the user has installed Simergy) at \LBNL\Simergy\Components\EnergyPlus\Samples\SampleIFC*
- Import Design Data Tree** - Initially this field will be empty, but it becomes populated with a tree for the model being imported. By selecting on different items within the tree, such as Building and the different floors, parameter information will be displayed in the *Import Model Data* field. At this stage the IFC model the user is working with is still in "Limbo Land" and is not officially incorporated into the model until *Copy to E+ Project Model* is selected, which completes the import process. *Tip: Although the import process is completed by selecting Copy to E+ Project Model, it has not been saved with the Simergy file, so it is important that the user do that to make sure the import effort has been captured.*
- Import Model Data** - the field where contextual information is provided for the IFC model being

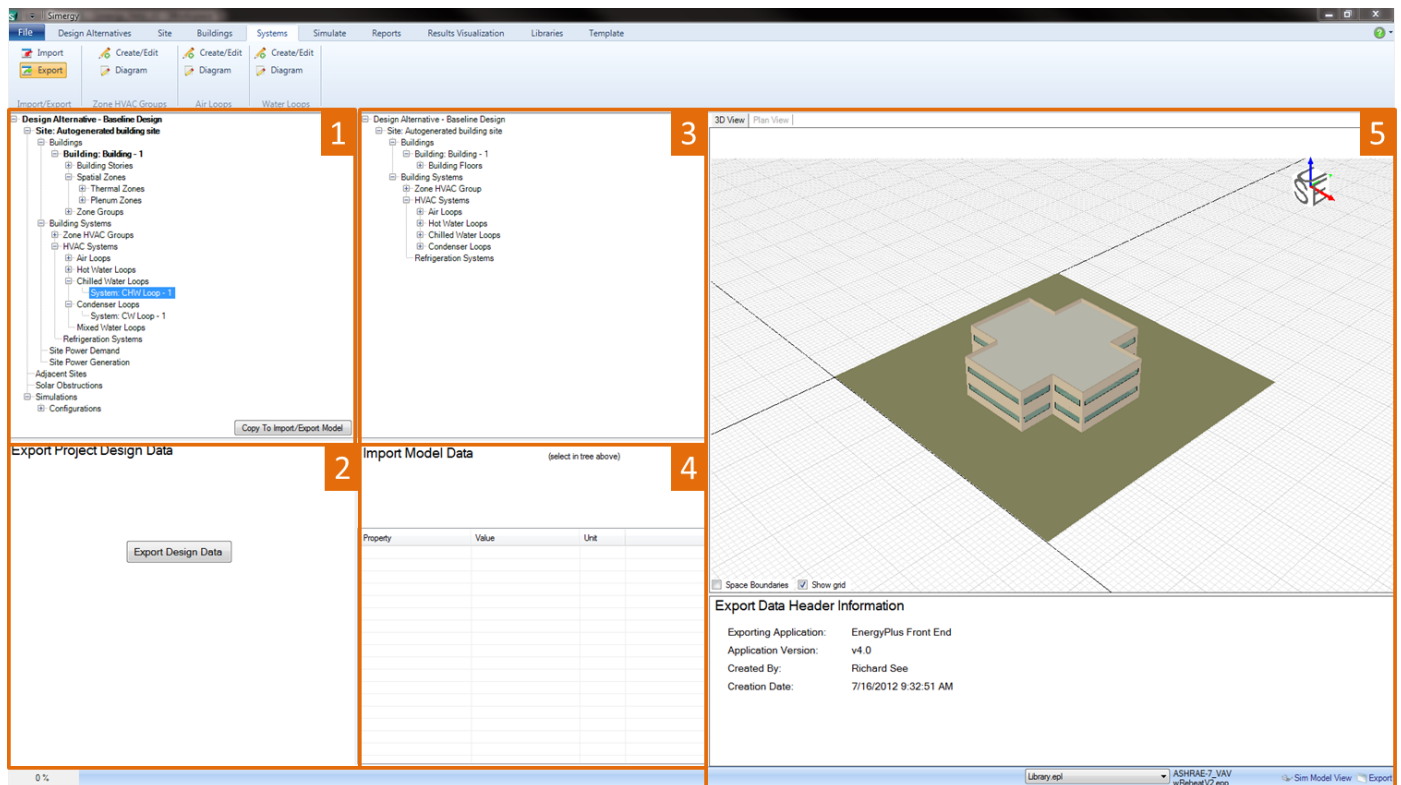
imported. The information displayed depends on what items within the project tree are selected and what information the imported IFC model contains.

5. **3d imported model view** - displays an interactive view of the 3d model that is being imported to enable a 'visual review' and also displays an interactive view of the 3d model after the import process has been completed. The main difference between these two states is that after the import process has been completed the user can select the *Space Boundaries* check box to visualize the layout within the model.

Workspace Guide

Import/Export - Export

The workspace provides the user the ability to export a Simergy model in Industry Foundation Class (IFC) version 2.3 and Input Data File (IDF) formats.



Main workspace areas:

1. **Project/Component Tree** (top left) - displays the tree for the current Design Alternative and allows the user to see the connections for the different components of the model. The export process is initiated by the user selecting *Copy to Import/Export model*, which populates the Import/Export Model field with a tree that can be used to interrogate the information included in the model.
2. **Export Project Design Data** (bottom left) - once the user has reviewed the information that will be exported with the model through selecting different items from the tree, reviewing the model data associated with them and visually inspecting the geometry within the 3d view, they can select *Export Design Data* to access the pop-up dialog that allows them to specify what type of export (IFC 2.3 or IDF) and the desired name and location for the file.
3. **Import/Export Design Data Tree** (middle top) - Initially this field will be empty, but it becomes populated

with a tree identifying relevant components once *Copy to Import/Export Model* has been selected by the user. By selecting on different items within the tree, such as Building and the different floors, parameter information depicting detail of what will be exported will be displayed in the *Import Model Data* field.

4. **Import/Export Model Data** - the field where detailed information is displayed once the user has selected a component from the tree in the field above. For example the user can select on building floors, hot water loops, chilled water loops and other selections to view additional detail of the export.
5. **3d Exported model view** - displays an interactive view of the 3d model that will be exported to enable a 'visual review' of the model in addition to the investigations of information in the Import/Export Model Data field.

[Workspace Guide](#)